



JOCKEY[®]

S C R U B S

JOCKEY

SEPTEMBER 2018
Collection

NEW

Great for group top pg. 12

Great for group pant pg. 13

JOCKEY

JOCKEY®

SCRUBS

JOCKEY® NEW PRODUCT

new product recap 6-13

PERFORMANCE RX® COLLECTION

ladies' tops 14-16, 18-27

ladies' pants 17, 28-33

men's top & pants 34-37

performance rx® prints 38-40

LADIES' COLLECTIONS

ladies' tops 42-57

ladies' jackets 58-67

ladies' pants 70-77

maternity top and pant 78-79

MEN'S & UNISEX COLLECTION

men's tops & pants 80-81

unisex tops & pant 82-82

jackets 84-85

style & fit guides 86-93

JOCKEY® PRINTS

ladies prints 68-69

color adds:

Style 2299 - Spruce/Hunter-1045

Style 2306 - Plumberry/Wine-1240

Style 2356 - Red-016, Purple-122 & Posh Pink-1231

Style 2403 - White-011 (with Black contrast & Pewter Mesh) & Black-015 (with White contrast & Pewter Mesh)

Style 2408 - White-011, Black-015 & New Navy-054



TRENDING COLOR

COLOR OF
THE SEASON

Purple 122

2299-122
2377-122

2206-122
2249-122

ACROSS THE COLLECTIONS





NEW STYLE



THE EDGE OF GREATNESS TOP

- Asymmetrical v-neckline gives this top a fun and modern feel
- Two top loading pockets with two signature zippered pockets on top to hold all your gear
- Angled back yoke and asymmetrical princess seam detail
- Side-seam hem venting for easy all-day movement

TRI-BLEND FABRIC:

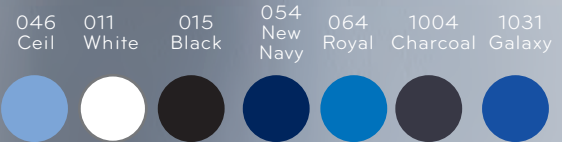
72% polyester, 21% rayon, 7% spandex

LENGTH: 26"

POCKETS: 4

SIZES: XXS-3X

STYLE # 2468





THESE PANTS CAN KEEP UP



THE EVERYDAY JOGGER

- Flat front full elastic waistband for ultimate comfort
- Fully covered elastic jogger ankle gives a sporty, but professional look every day
- Two front angled hip pockets and two angled on-seam back hip pockets will hold everything you need
- 11" elastic leg opening with 31" inseam

TRI-BLEND FABRIC

72% polyester, 21% rayon, 7% spandex

SIZES: XXS-3X, XXSP-3XP, XST-XLT

POCKETS: 4

STYLE # 2467



NEW STYLE





SOLID ILLUSION® PANT

- Subtle hint of print using Solid Illusion® Geo Tech pattern to give you a fun pop of style
- Half elastic back and half drawstring front for maximum comfort
- Two front angled pockets plus cargo with additional signature zipper pocket offer incredible security and storage
- Slight flare
- Side vents for ease of movement
- 19" leg opening with 31 ½" inseam

TRI-BLEND SOLID ILLUSION® FABRIC:

72% polyester, 21% rayon, 7% spandex

POCKETS: 4

SIZES: XXS-5X, XXSP-2XP, XST-XLT

STYLE # 2250

NEW STYLE



- 015 Black
- 054 New Navy
- 064 Royal
- 1054 Pewter
- 122 Purple

GREAT FOR GROUPS TOP

- Soft v-neck with triple needle stitching down front and across pocket tops
- Princess seams fit to flatter everyone
- Two roomy top-loading pockets to hold all your gear
- Side-seam hem vents for easy all-day movement

TRI-BLEND FABRIC:

72% polyester, 21% rayon, 7% spandex

LENGTH: 26"

POCKETS: 2

SIZES: XXS-5X

STYLE # 2448



MODERN FIT



GREAT FOR GROUPS PANT

- 1" soft comfort pull on full elastic waist pant
- Stylish tapered straight leg design with side vents
- Two curved front hip pockets
- 16" leg opening with 31 ½" inseam

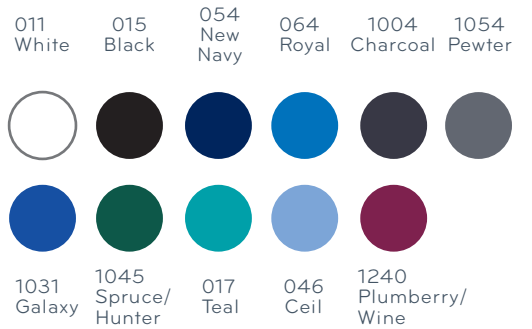
TRI-BLEND SOLID ILLUSION® FABRIC:

72% polyester, 21% rayon, 7% spandex

SIZES: XXS-5X, XSP-XLP, XST-XLT

POCKETS: 2

STYLE # 2453



NEW STYLE

JOCKEY.
SIZE
S -
Made in Mexico

JOCKEY.



MOISTURE
WICKING



FOUR-WAY
STRETCH



ANTIMICROBIAL
ODOR CONTROL



PERFORMANCE RX[®]

Premier performance collection designed to keep up with you in any condition. Athletic inspired fit with fabrics that help you keep cool, comfortable & odor free in any activity.

EMBOSSED SIDE PANEL TOP

- T-shirt styled v-neckline with embossed panel in back neck
- Two top loading welt pockets made to hold all your gear
- Embossed front and back side panels
- Move-with-you side vents
- Reflective Jockey® Logo

93% POLYESTER / 7% SPANDEX
FOUR-WAY STRETCH MOISTURE
WICKING FABRIC WITH ANTIMICROBIAL
ODOR CONTROL TECHNOLOGY

LENGTH: 25"

POCKETS: 2

SIZES: XXS-3X

STYLE # 2464



MOISTURE
WICKING



FOUR-WAY
STRETCH



ANTIMICROBIAL
ODOR CONTROL

EMBOSSED SIDE PANEL PANT

- Flat front full elastic embossed waistband with Jockey® branded elasticized tie
- Side leg cargo pocket set in the embossed side panel
- Back facing action vent
- Reflective Jockey® Logo
- 16" tapered leg opening with 31 ½" inseam

93% POLYESTER / 7% SPANDEX FOUR-WAY STRETCH
MOISTURE WICKING FABRIC WITH ANTIMICROBIAL
ODOR CONTROL TECHNOLOGY

POCKETS: 1

SIZES: XXS-3X, XSP-3XP, XST-XLT

STYLE # 2466



037 Jet Black	054 New Navy	064 Royal	1004 Charcoal	1031 Galaxy	1231 Posh Pink	1263 Sea Blue
---------------------	--------------------	--------------	------------------	----------------	----------------------	---------------------



SIDE DETAIL



MOISTURE
WICKING



FOUR-WAY
STRETCH



ANTIMICROBIAL
ODOR CONTROL



MOISTURE
WICKING



FOUR-WAY
STRETCH



ANTIMICROBIAL
ODOR CONTROL

FLEX GEN TOP

- Asymmetrical princess seam mock wrap neckline
- Two deep top loading pockets with Jockey[®] branded elastic tool tape
- Move-with-you side vents
- Reflective Jockey[®] logo

93% POLYESTER / 7% SPANDEX
FOUR-WAY STRETCH MOISTURE
WICKING FABRIC WITH ANTIMICROBIAL
ODOR CONTROL TECHNOLOGY

LENGTH: 26" **POCKETS:** 2

SIZES: XXS-3X

STYLE # 2463

037 Jet Black	054 New Navy	064 Royal	1004 Charcoal
---------------------	--------------------	--------------	------------------



1031 Galaxy	1231 Posh Pink	1263 Sea Blue
----------------	----------------------	---------------------





PERFORMANCE RX®

HOOKED ON
JOCKEY®



MAKE YOUR MOVE TOP

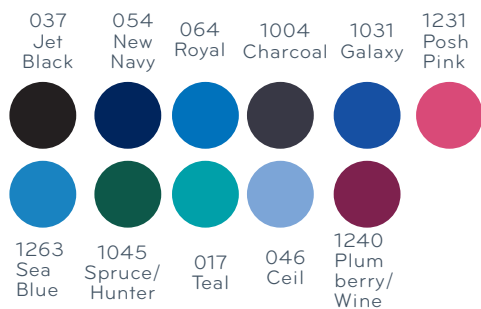
- Shaped v-neckline with angled yoke and badge loop made to move with you
- Double angled pockets will hold all your gear
- Athletic inspired Y-stripe back detail
- Move-with-you side vents
- Reflective Jockey® logo

93% POLYESTER / 7% SPANDEX FOUR-WAY STRETCH
 MOISTURE WICKING FABRIC WITH ANTIMICROBIAL
 ODOR CONTROL TECHNOLOGY

LENGTH: 25" **POCKETS:** 4

SIZES: XXS-3X

STYLE # 2419



MOISTURE
WICKING



FOUR-WAY
STRETCH



ANTIMICROBIAL
ODOR CONTROL



ALL DAY
COMFORT



MOTION
MESH



PEAK PERFORMANCE TOP

- Curved back yoke with breathable Motion Mesh™ peek-a-boo keyhole to help keep you cool and comfortable
- Sleek curved v-neck featuring texture band
- Two needle action stitching for durability
- Two deep top-loading pockets with texture curved pocket tops
- Texture insert side vents
- Reflective Jockey® logo

BODY: 93% POLYESTER / 7% SPANDEX
FOUR-WAY STRETCH MOISTURE WICKING FABRIC WITH ANTI-MICROBIAL ODOR CONTROL TECHNOLOGY

KEYHOLE: 90% NYLON / 10% SPANDEX
SHEER MOTION MESH™

LENGTH: 25"

POCKETS: 2

SIZES: XXS-3X

STYLE # 2441





MOISTURE
WICKING

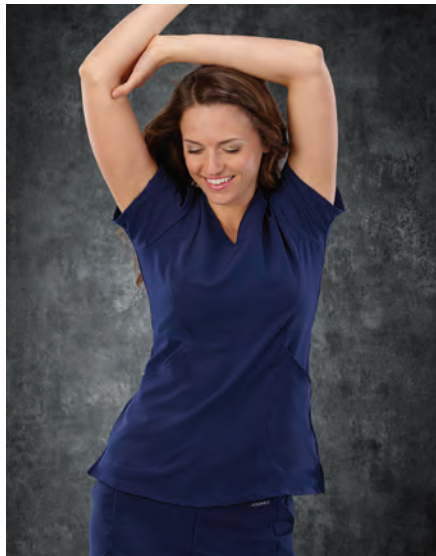


FOUR-WAY
STRETCH



ANTIMICROBIAL
ODOR CONTROL





ACROSS PERFORMANCE TOP

- T-Shirt styled v-neckline created to be comfy and cool
- On seam top loading pockets made to hold all your gear
- Athletic inspired crisscross back detail
- Move-with-you side vents
- Reflective Jockey® logo

93% POLYESTER / 7% SPANDEX FOUR-WAY STRETCH MOISTURE WICKING FABRIC WITH ANTIMICROBIAL ODOR CONTROL TECHNOLOGY

LENGTH: 25 ½" **POCKETS:** 2

SIZES: XXS-3X

STYLE # 2436



037
Jet
Black



054
New
Navy



064
Royal



1004
Charcoal



1031
Galaxy



1231
Posh
Pink



1263
Sea
Blue



COLORS
ADDED

DRY COMFORT TEE

- Rounded comfort collar with set in sleeves
- Athletic inspired X back detail
- Hi-low shirrtail hem

95% POLYESTER / 5% SPANDEX SILK TOUCH
MOISTURE WICKING FABRIC

LENGTH: 25" POCKETS: 0

SIZES: XXS-3X

STYLE # 2408



015
Black
NEW!

054
New Navy
NEW!

011
White
NEW!

1107
Key Lime

064
Royal

1231
Posh Pink

1263
Sea Blue



MOISTURE
WICKING



FOUR-WAY
STRETCH



MOISTURE
WICKING



FOUR-WAY
STRETCH



ANTIMICROBIAL
ODOR CONTROL

AH-MAZING MOVEMENT



AH-MAZING MOVEMENT PANT

- Jockey® branded exposed elastic waist pant with elasticized Jockey® tie
- Two angled hip pockets, plus two back welt pockets and a side cargo with elastic tool tape to store your gear
- Side facing action vent
- Reflective Jockey® Logo
- 16" tapered leg opening with 32" inseam

93% POLYESTER / 7% SPANDEX FOUR-WAY STRETCH
MOISTURE WICKING FABRIC WITH ANTIMICROBIAL ODOR
CONTROL TECHNOLOGY

POCKETS: 5

SIZES: XXS-3X, XSP-3XP, XST-XLT

STYLE # 2421



037
Jet
Black

054
New
Navy

064
Royal

1004
Charcoal

1031
Galaxy

1231
Posh
Pink

1263
Sea
Blue



GET-UP-AND-GO PANT

- Textured half elastic pant with full tonal twill tape tie and curve hugging back yoke
- Two angled hip pockets and one generous angled cargo pocket to store your gear
- Forward facing action leg vent
- Reflective Jockey® logo
- 16" tapered leg opening with 32" inseam

93% POLYESTER / 7% SPANDEX FOUR-WAY STRETCH MOISTURE WICKING FABRIC WITH ANTIMICROBIAL ODOR CONTROL TECHNOLOGY

SIZES: XXS-3X, XSP-3XP, XST-XLT

POCKETS: 3

STYLE# 2428



MOISTURE WICKING



FOUR-WAY STRETCH



ANTIMICROBIAL ODOR CONTROL

037
Jet
Black



054
New
Navy



064
Royal



1004
Charcoal



1031
Galaxy



1231
Posh
Pink



1263
Sea
Blue



1045
Spruce/
Hunter



017
Teal



046
Ceil



1240
Plumberry/
Wine



POCKETS
FOR DAYS





BE BOLD

ZEN PANT

- Hidden *Be Bold* message in waistband
- Maximum comfort waistband to keep your Namaste all day
- Sleek side hip secured zipper pockets with texture angled panels
- Forward facing action leg vent
- Reflective Jockey® logo
- 16" tapered leg opening with 32" inseam



MOISTURE
WICKING



FOUR-WAY
STRETCH



ANTIMICROBIAL
ODOR CONTROL

93% POLYESTER / 7% SPANDEX FOUR-WAY
STRETCH MOISTURE WICKING FABRIC WITH
ANTIMICROBIAL ODOR CONTROL TECHNOLOGY

SIZES: XXS-3X, XSP-3XP, XST-XLT

POCKETS: 2

STYLE# 2422



1263
Sea
Blue

1045
Spruce/
Hunter

064
Royal

1240
Plumberry/
Wine

1031
Galaxy

1004
Charcoal

046
Ceil

037
Jet
Black

1231
Posh
Pink

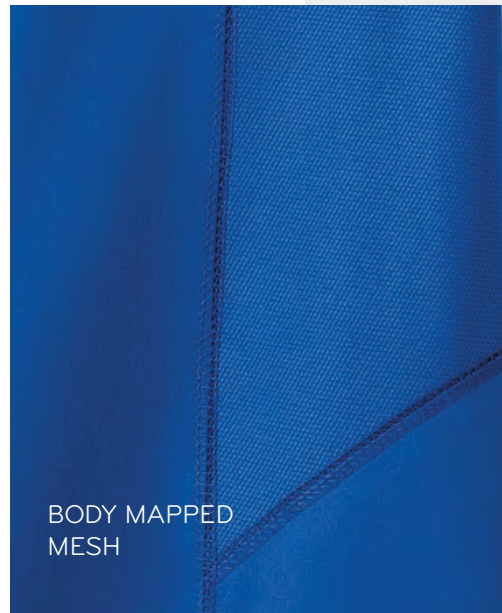
054
New
Navy

017
Teal

Hidden Message
in waistband



DOUBLE CHEST
POCKETS



BODY MAPPED
MESH

MESH TECH TOP

- Comfort shaped V-neck fits like your favorite tee
- Body mapped mesh venting to keep you cool and dry
- Double chest pocket with texture detail
- Action back details stretch and move with you in any activity
- Reflective Jockey® logo

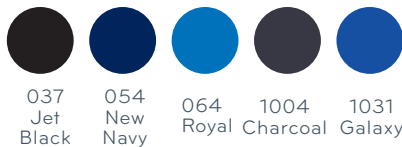
BODY: 93% POLYESTER / 7% SPANDEX FOUR-WAY STRETCH MOISTURE WICKING FABRIC WITH ANTIMICROBIAL ODOR CONTROL TECHNOLOGY

MESH: 100% COOL COMFORT POLYESTER

SIZES: S-4X

POCKETS: 2

STYLE# 2412



037
Jet
Black

054
New
Navy

064
Royal

1004
Charcoal

1031
Galaxy



MOISTURE
WICKING



FOUR-WAY
STRETCH



ANTIMICROBIAL
ODOR CONTROL

A man with dark hair and a light beard is smiling and looking to his right. He is wearing a bright blue V-neck short-sleeved scrub top with a chest pocket and matching blue scrub pants. The background is a white brick wall.

COOL
COMFORT



MOVEMENT
MADE EASY



MOISTURE WICKING



FOUR-WAY STRETCH



ANTIMICROBIAL ODOR CONTROL

STRETCH TECH PANT

- Textured full comfort elastic waistband with inside tonal twill tape tie
- Two contrast full side hip pockets and two streamlined back welt pockets
- Gusseted inseam for freedom of movement and fully functioning zipper fly
- Reflective Jockey® logo
- 17" leg opening with 31 1/2" inseam

BODY: 93% POLYESTER / 7% SPANDEX FOUR-WAY STRETCH MOISTURE WICKING FABRIC WITH ANTIMICROBIAL ODOR CONTROL TECHNOLOGY

SIZES: S-4X, ST-XLT

POCKETS: 4

STYLE# 2413



037
Jet
Black

054
New
Navy

064
Royal

1004
Charcoal

1031
Galaxy

**Jacket can be found on page 8 in Last Call catalog*

Prints

PERFORMANCE RX[®] KINETIC ENERGY



MOISTURE
WICKING



FOUR-WAY
STRETCH



ANTIMICROBIAL
ODOR CONTROL

Kinetic Grey-347

wear this print
with these color pants

- 1107 Key Lime
- 1054 Pewter
- 1004 Charcoal
- 015 Black
- 011 White



KINETIC TOP

- Sporty round neckline with front and back modest peek-a-boo Motion Mesh™ panel
- Athletic inspired curved shirrtail hem with side vents
- Two side entry pockets
- Reflective Jockey® Logo

PRINT: 90% POLYESTER / 10% SPANDEX
PERFORMANCE LIGHTWEIGHT MOISTURE
WICKING FABRIC

SOLID: 93% POLYESTER / 7% SPANDEX 93%
FOUR-WAY STRETCH MOISTURE WICKING
FABRIC WITH ANTIMICROBIAL ODOR CONTROL
TECHNOLOGY

LENGTH: 25" **POCKETS:** 2

SIZES: XXS-3X

STYLE # 2433



Kinetic Multi-346

wear this print
with these color pants*

064 Royal

1107 Key Lime

1231 Posh Pink

054 New Navy

VELOCITY

- Strappy contrast accented v-neck
- Two angled patch pockets with contrast tool tape
- Reflective Jockey® Logo

PRINT: 90% POLYESTER / 10% SPANDEX PERFORMANCE
LIGHTWEIGHT MOISTURE WICKING FABRIC

LENGTH: 25"

POCKETS: 2

SIZES: XXS-3X

STYLE # 2432



MOISTURE
WICKING



FOUR-WAY
STRETCH



Velocity-3410

064 Royal	1263 Sea Blue
1231 Posh Pink	015 Black
011 White	1031 Galaxy
1107 Key Lime	122 Purple

wear
with

JOCKEY® SCRUBS

A balanced collection of modern and classic styling and fit. Known for easy care, *Wash-Dry-Wear* right out of the dryer. Both Jockey® Scrubs Collections can mix and match for the most comfortable professional wardrobe. COMFORT GUARANTEED.



COMFORT GUARANTEED

Side zippers keeps you secure
A TOP WITH REAL ZIP



BUNGEE CORD
 quick badge attachment

TOP POCKETS
 deep top pockets for loading up

SIDE VENTS
 make movement easy

ZIP POCKETS
 for safe storage and convenient storage

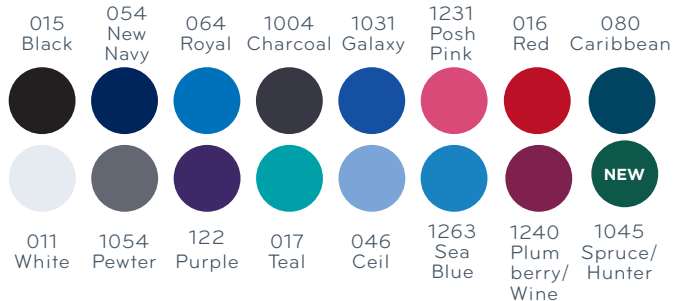
TRUE FIT CROSSOVER V-NECK TOP

- High crossover neckline creates an updated v-neckline
- Front yoke ID badge loop keeps your ID secure
- Unique four pocket design has two top loading on-seam pockets with two side entry signature zippered pockets
- Side vents for ease of movement

TRI-BLEND FABRIC:
 72% polyester, 21% rayon, 7% spandex
LENGTH: 26"
POCKETS: 4
SIZES: XXS-5X
STYLE # 2299



wear with Want to complete the look? Turn to pg. 75 for the best-of-the-best pant



NOW AVAILABLE IN
SPRUCE/HUNTER

GROUP
FRIENDLY



SPORTY MESH PANEL V-NECK TOP

- T-shirt inspired v-neck top is soft to the touch
- Contrast tri-blend panels on front and back for athletic inspired look
- Contrast mesh side panels to keep you cool and comfortable

TRI-BLEND FABRIC:

72% polyester, 21% rayon,

7% spandex

MESH: 100% polyester

LENGTH: 25 1/2"

POCKETS: 2

SIZES: XXS-3X

STYLE # 2403

Multi-color details
**SPORTY
MESH PANEL
V-NECK**

NEW COLORS



011 White
w/Black contrast
& Pewter mesh

015 Black
w/White contrast
& Pewter mesh



017 Teal
w/New Navy
contrast
& Pewter mesh

054 New Navy
w/Ceil contrast
& Pewter mesh

064 Royal
w/Lime contrast
& Black mesh



1263 Sea Blue
w/Black contrast
& Charcoal mesh

092 Eggplant
w/Black contrast
& Pewter mesh

1231 Posh Pink
w/Black contrast
& Pewter mesh

THE FAVORITE V-NECK TOP

- Unique v-neck styling offers a feminine touch
- Two top loading pockets with a signature zippered pocket for added security
- Side seam hem venting for easy all-day movement

TRI-BLEND FABRIC:

72% polyester, 21% rayon, 7% spandex

LENGTH: 27"

POCKETS: 3

SIZES: XXS-5X

STYLE # 2206



CLASSIC FIT

NURSES
FAVORITE

Signature zipper keeps you secure
A TOP WITH REAL ZIP

NECKLINE
 comfort and
 flattering v-neck



ZIP POCKETS
 for safe and
 convenient storage

- | | | | | | | | | | |
|--------------|--------------------|---------------|------------------|----------------|----------------------|--------------------------------|---------------------------|----------------------|------------------|
| 015
Black | 054
New
Navy | 064
Royal | 1004
Charcoal | 1031
Galaxy | 1231
Posh
Pink | 016
Red | 080
Caribbean | 092
Egg-
plant | 1262
Hibiscus |
| | | | | | | | | | |
| 011
White | 1054
Pewter | 122
Purple | 017
Teal | 046
Ceil | 1263
Sea
Blue | 1240
Plum
berry/
Wine | 1045
Spruce/
Hunter | 1107
Key
Lime | |
| | | | | | | | | | |



WASH-DRY-WEAR
EASY CARE



THE COOL MESH V-NECK

THE COOL MESH SHIRTTAIL TOP

- Curved mesh v-neck and center mesh panel on back for all-day comfort and breathability
- Princess lines for a more flattering fit
- Shirrtail hem with mesh trimmed edge for an athletic inspired look

TRI-BLEND FABRIC:

72% polyester, 21% rayon, 7% spandex

MESH: 100% polyester

LENGTH: 25½"

POCKETS: 2

SIZES: XXS-3X

STYLE # 2401



MODERN FIT

015 Black	054 New Navy	064 Royal	1031 Galaxy	
1054 Pewter	092 Egg- plant	1004 Charcoal	1263 Sea Blue	1231 Posh Pink





JOCKEY.
SIZE
- S -
Made in El Salvador

JOCKEY.
SIZE
- S -
Made in Nicaragua

JOCKEY.
SIZE
- XS -
Made in El Salvador

JOCKEY

JOCKEY

JOCKEY

JOCKEY

JOCKEY

INNOVATIVE
BREATHABLE MESH

Mesh technology is so refreshing
THE PERFECT MESH

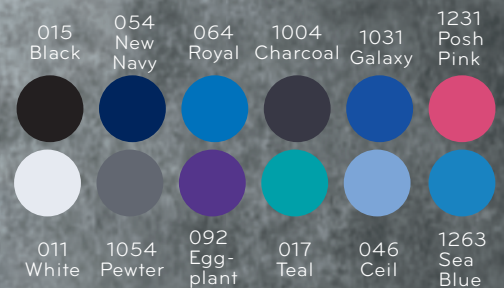
**MESHABILITY
MODERN TOP**

- T-shirt inspired v-neck creates comfort and style
- Strategically placed mesh around arm and back of neck gives you a breathable feeling
- Curved hem pockets with mesh trim detail
- Front and back princess seams for a flattering fit

TRI-BLEND FABRIC:
72% polyester, 21% rayon, 7% spandex
MESH: 100% polyester
LENGTH: 25½" **POCKETS:** 3
SIZES: XXS-3X
STYLE # 2329



MODERN FIT



we know what matters
FIT TO FLATTER



BUNGEE CORD
quick badge
attachment

LARGE POCKETS
with signature zipper to
keep your valuables secure

**HIDDEN POCKET
INSIDE**

CURVES AHEAD MOCK WRAP TOP

- Clean-finished mock wrap neckline with princess seaming for a universally flattering fit
- Forward shoulder seam ID badge loop keeps your ID secure
- Unique top loading pockets with two additional signature zippered pockets on top and one hidden media pocket
- Side seam hem venting for easy all-day movement

TRI-BLEND FABRIC:
72% polyester, 21% rayon, 7%
spandex
LENGTH: 26"
POCKETS: 5 (1 hidden)
SIZES: XXS-5X
STYLE # 2306





- | | | | | | |
|------------------|--------------------|---------------------------|--------------------------------|----------------|----------------------|
| 122
Purple | 046
Ceil | 017
Teal | 1240
Plum
berry/
Wine | | |
| | | | | | |
| 080
Caribbean | 016
Red | 1045
Spruce/
Hunter | 011
White | 1054
Pewter | |
| | | | | | |
| | | | | | |
| 015
Black | 054
New
Navy | 064
Royal | 1004
Charcoal | 1031
Galaxy | 1231
Posh
Pink |

AN ESSENTIAL PIECE FOR BUILDING YOUR WARDROBE



1262-Hibiscus



016-Red



1054-Pewter



122-Purple



054-New Navy



1263-Sea Blue



015-Black



064-Royal

SPORTY V-NECK TOP

- Princess seams are attractively accented with contrast piping
- Two pockets emphasized with double-needle contrast topstitching
- Contrast band found inside shirttail hem
- No side venting for a sporty look

TRI-BLEND FABRIC:

72% polyester, 21% rayon, 7% spandex

LENGTH: 26"

POCKETS: 2

SIZES: XXS-5X

STYLE # 2339



CLASSIC FIT



WARDROBE
BUILDER



MODERN
V-NECK



Color meets comfort in style
VIBRANT V-NECK

THE MODERN V-NECK TOP

- Flattering v-neck top features contrast back neck facing and bartacks
- Front and back princess lines and T-shaped back yoke offer feminine touches
- Double patch pockets plus one security pocket with zipper
- Side seam hem venting means easy all-day movement

TRI-BLEND FABRIC:

72% polyester, 21% rayon, 7% spandex

LENGTH: 25"

POCKETS: 3

SIZES: XXS-5X

STYLE # 2309



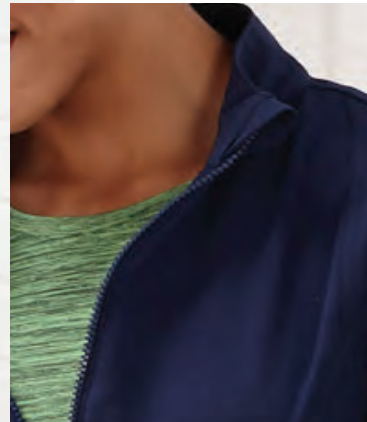
MODERN FIT

011 White	015 Black	1054 Pewter	1263 Sea Blue	064 Royal	1031 Galaxy	054 New Navy	046 Ceil	017 Teal
1107 Key Lime	092 Egg-plant	1004 Charcoal	1231 Posh Pink	016 Red	080 Carib-bean	1045 Spruce/Hunter	1240 Plum berry/Wine	

Want to complete the look? Turn to pg. 70 for the **3-IN-1 CONVERTIBLE PANT.**



THE MUST HAVE VEST



SPORTY ZIP VEST

- Stand-up collar with zipper garage for added comfort
- Full zipper closure
- Front and back princess seams for ultimate fit
- Three roomy top loading pockets

TRI-BLEND FABRIC:

72% polyester, 21% rayon, 7% spandex

LENGTH: 24 1/2"

POCKETS: 3

SIZES: XXS-3X

STYLE # 2458



015
Black



054
New
Navy



1004
Charcoal



JUST RIGHT
LAYERING

Secure your playlist with

TECH FLEECE JACKET

EARBUD HOLDER
on zipper pull



HIDDEN POCKET
zippered pocket on back

TECH FLEECE JACKET

- Athletic inspired fit with princess seams and stand-up collar
- Full zipper closure with earbud holder on zipper
- Two front pockets and one hidden zipper pocket on back to secure your items

FLEECE: 92% polyester, 8% spandex

LENGTH: 25 1/2"

POCKETS: 3

SIZES: XXS-3X

STYLE # 2399



MODERN FIT



015
Black



054
New
Navy



1004
Charcoal



Professional Elegance

TAILORED QUILTED JACKET

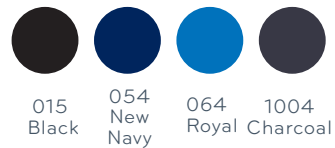


WASH-DRY-WEAR
EASY CARE



TAILORED QUILTED JACKET

- Full zipper front with stand-up collar
- Quilted tri-blend side panels for all day comfort
- Curved top loading pockets to hold all of your personal items
- Straight, contemporary sleeve style



TRI-BLEND FABRIC:

72% polyester, 21% rayon, 7% spandex

LENGTH: 26"

POCKETS: 2

SIZES: XXS-5X

STYLE # 2383



It's a zip to close

RIVETING WARM-UP



RIVETING WARM-UP

- Rounded v-neck with zipper closure
- Soft, stretch color-matched knit cuffs
- Roomy patch pockets with rivet detail and hidden media pocket

RIVETING DETAILS

rivets finish the pockets

SOFT STRETCH CUFF

TRI-BLEND FABRIC: 72% polyester, 21% rayon, 7% spandex

LENGTH: 28"

POCKETS: 3

SIZES: XXS-5X

STYLE # 2378



015
Black

054
New
Navy

064
Royal

1054
Pewter

011
White



ZIP CLOSURE



SNAP
CLOSURE

Updated snap closures

SNAP TO IT WARM-UP

SNAP TO IT WARM-UP

- Round neckline with color matching cap snap closure
- Front and back princess seams with two top loading roomy pockets and hidden media pocket
- Soft, stretch color matched knit cuffs

TRI-BLEND FABRIC:

72% polyester, 21% rayon, 7% spandex

LENGTH: 28"

POCKETS: 3

SIZES: XS-5X

STYLE # 2356



CLASSIC FIT

015 Black	054 New Navy	064 Royal	1004 Charcoal	1031 Galaxy	1231 Posh Pink	080 Caribbean
011 White	1054 Pewter	122 Purple	046 Ceil	017 Teal	016 Red	1045 Spruce/Hunter
						1240 Plum-berry/Wine

DEWY DAYDREAM

PRINTED V-NECK TOP

- Unique v-neck design with contrast piping adds individual style
- Two deep angled patch pockets with contrast mobile device pocket
- Side-seam hem venting offers effortless, all-day mobility
- Extended size range

EASY-CARE FABRIC: 100% polyester

LENGTH: 26"

POCKETS: 3

SIZES: XXS-3X

STYLE # 2366

wear this print with these color pants



054 New Navy

1263 Sea Blue



CLASSIC FIT



ICED BEAUTY PRINTED BUTTON PLACKET SHIRTTAIL TOP

- Updated placket with Jockey® branded button feature
- Curved shirrtail hem
- Two curved patch pockets with triple needle top-stitching

EASY-CARE FABRIC:: 100% polyester

LENGTH: 26"

POCKETS: 2

SIZES: XXS-5X

STYLE # 2434



CLASSIC FIT

3272
Iced Beauty
wear this print with these color pants



1054 Pewter

1004 Charcoal

015 Black

011 White

054 New Navy

1031 Galaxy

064 Royal



Hibiscus & Posh Pink

DA VINCI'S GARDEN

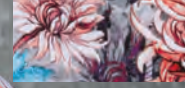
PRINTED V-NECK TOP

- Unique v-neck design with contrast piping adds individual style
- Two deep patch pockets plus mobile device pocket add convenience
- Side-seam hem venting offers effortless, all-day mobility
- Extended size range

EASY-CARE FABRIC: 100% polyester
LENGTH: 26" **POCKETS:** 3
SIZES: XXS-5X
STYLE # 2344



3271
 DaVinci's Garden - Hibiscus
 wear this print
 with these color pants



- 1262 Hibiscus
- 1054 Pewter
- 1004 Charcoal
- 1263 Sea Blue
- 011 White

3270
 DaVinci's Garden - Posh Pink
 wear this print
 with these color pants



- 1231 Posh Pink
- 1054 Pewter
- 1004 Charcoal
- 017 Teal
- 011 White
- 092 Eggplant
- 1240 Plumberry /Wine



Wear it your way

3-IN-1

THE 3-IN-1 CONVERTIBLE PANT

- Convertible drawstring waist lets you choose between mid-rise and low-rise
- Tie on the outside for a traditional look, the inside for a tailored look and flip it down for a sportier look
- Triple-colored waistband offers versatility
- Cover-stitch details create a sporty look
- 18" leg opening, straight leg inseam 31 1/2"

TRI-BLEND FABRIC: 72% polyester, 21% rayon, 7% spandex

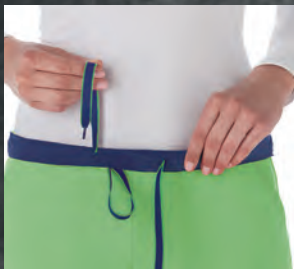
POCKETS: 3 SIZES: XXS-5X; XXSP-3XP; XST-XLT

STYLE # 2313



MODERN FIT

Ties on the outside. or inside.



TRADITIONAL

011 White	015 Black	1054 Pewter	1263 Sea Blue	064 Royal	1031 Galaxy	054 New Navy	046 Ceil	017 Teal
1107 Key Lime	092 Egg-plant	1004 Charcoal	1231 Posh Pink	016 Red	080 Carib-bean	1045 Spruce/Hunter	1240 Plum berry/Wine	



FLAT FRONT



YOGA INSPIRED



JOCKEY

Stretch to perfection

THE YOGA MOVEMENT

SOFT COMFORT YOGA PANT

- Contoured yoga waistband gently hugs and flatters
- Secure side leg welt pocket creates an uncomplicated look
- 19" leg opening with a straight leg 31" inseam

TRI-BLEND FABRIC:

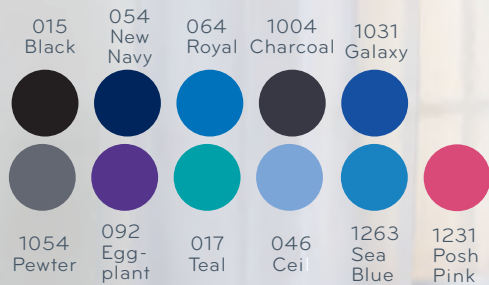
72% polyester, 21% rayon, 7% spandex

POCKETS: 1 **SIZES:** XXS-2X, XX-SP-XLP, XXST-XLT

STYLE # 2358



MODERN FIT



ELASTIC BACK

for comfort and movement

DRAWSTRING

for perfect fit

**BEST SELLING
PANT**

CARGO POCKET

with signature zip
pocket for safe
storage



THE FAVORITE FIT PANT

- Half elastic back and half drawstring front for maximum comfort
- Two front angled pockets plus cargo with signature zipper pocket offer incredible security and storage
- Side vents for ease of movement
- 19" leg opening with a slight flare 31" inseam

TRI-BLEND FABRIC:

72% polyester, 21% rayon, 7% spandex

SIZES: XXS-5X, XXSP-2XP, XST-XLT

POCKETS: 4

STYLE # 2249



CLASSIC FIT



Striding for perfection

EXTREME COMFY PANT

EXTREME COMFY PANT

- Relaxed fit and slightly flared leg to ensure the ultimate comfort
- Full elastic waist design with drawstring closure
- Multi-pockets all in front for all-day functionality and lots of storage options
- Vented leg openings for ease of movement
- 18" leg opening with 31" inseam

TRI-BLEND FABRIC:

72% polyester, 21% rayon, 7% spandex

SIZES: XXS-5X, XXSP-2XP, XST-XLT

POCKETS: 4

STYLE # 2377



CLASSIC FIT

FULL ELASTIC WAIST
with drawstring closure

MULTI-POCKET
for functionality and security

VENTED LEG
for ease of movement



- | | | | | | | | | |
|--------------|-----------------|--------------|------------------|-----------------------|-------------------|------------------|------------------|-------------------------|
| 015
Black | 054
New Navy | 064
Royal | 1004
Charcoal | 1031
Galaxy | 1231
Posh Pink | 016
Red | 080
Caribbean | |
| 011
White | 1054
Pewter | 046
Ceil | 017
Teal | 1045
Spruce/Hunter | 122
Purple | 1263
Sea Blue | 092
Egg-plant | 1240
Plum berry/Wine |

EMPIRE WAIST MATERNITY TOP

- Keyhole neckline detail offers a feminine touch
- Empire waist with adjustable back ties gives a customizable fit
- Two front patch pockets to hold your gear

TRI-BLEND FABRIC:

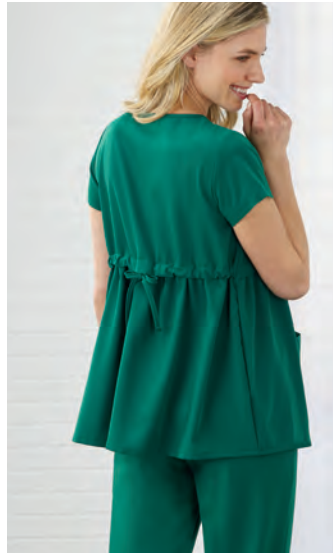
72% polyester, 21% rayon, 7% spandex

LENGTH: 26 ½"

POCKETS: 2

SIZES: XS-3X

STYLE # 2461



PLEATED BACK MATERNITY TOP

- T-shirt inspired v-neck for an on trend look
- Deep side entry front pockets store your gear out of the way
- Sporty pleated back allows room for growing tummies

TRI-BLEND FABRIC:

72% polyester, 21% rayon, 7% spandex

LENGTH: 26 ½"

POCKETS: 2

SIZES: XS-3X

STYLE # 2462



THE ULTIMATE MATERNITY PANT

- Pure comfort front and back stretch panel
- Two front and two back hip pockets
- Mock fly detail
- Side vents for ease of movement
- 16" leg opening with 31 1/2" inseam

TRI-BLEND FABRIC:

72% polyester, 21% rayon, 7% spandex

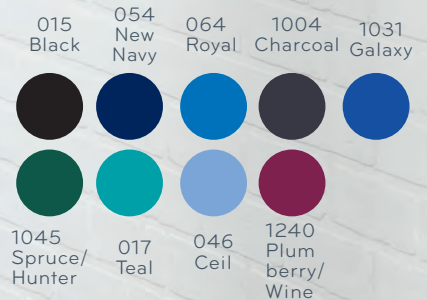
SIZES: XS-3X

POCKETS: 4

STYLE # 2459



MATERNITY COLLECTION



Comfort and functionality together

Men's classic fit collection



MEN'S MESH TOP

- Breathable mesh shoulder panels to keep you cool and comfortable
- Reflective tape on back for athletic look
- Sporty v-neck for all day comfort
- Chest pocket to store your personal items

TRI-BLEND FABRIC:

72% polyester, 21% rayon, 7% spandex

MESH FABRIC: 100% polyester

LENGTH: 28"

POCKETS: 1

SIZES: XS-4X

STYLE # 2374

MEN'S EVERYTHING PANT

- Adjustable waistband with full elastic and inside drawstring for maximum comfort
- Fully functional zipper fly, five belt loops and two front-side slash pockets
- Right cargo pocket features inside phone pocket, and left divided cargo pocket for pens and instruments
- Two secure, back-zippered welt pockets with inside bags hold wallet and phone on the inside
- 19" leg opening, straight leg inseam 31"

TRI-BLEND FABRIC:

72% polyester, 21% rayon, 7% spandex

POCKETS: 7

SIZES: XS-4X; XSSH-XLSH; SST-XLT

STYLE # 2305



POCKETS
ON
POCKETS

- | | | | | |
|--------------|--------------------|--------------|------------------|------------------|
| 015
Black | 054
New
Navy | 064
Royal | 1004
Charcoal | 1031
Galaxy |
| 011
White | 1054
Pewter | 046
Ceil | 017
Teal | 080
Caribbean |

Unisex set

DESIGNED FOR THE GROUP IN MIND

ONE POCKET UNISEX TOP

- Banded v-neck design for a classic, professional look
- Classic front and back shoulder yoke detailing
- Topstitching details provide extra strength and style
- Chest pocket stores personal items
- Side vents allow for easy mobility

TRI-BLEND FABRIC: 72% polyester, 21% rayon, 7% spandex

LENGTH: 28" (M) **POCKETS:** 1 **SIZES:** XS-4X

STYLE # 2200



FOUR POCKET UNISEX TOP

- Banded v-neck design for a classic, professional look
- Forward dropped shoulder with badge loop for maximum comfort
- Four pockets for all your gear
- Side vents allow for easy mobility

TRI-BLEND FABRIC:

72% polyester, 21% rayon, 7% spandex

LENGTH: 28" **POCKETS:** 4 **SIZES:** XS-4X

STYLE # 2371

THE BEST UNISEX PANT

- The newest unisex pant in the industry
- Full drawstring tie-waist has back elastic for maximum adjustability and comfort
- Slimmer silhouette flatters both men and women
- Deep cargo pocket on thigh is ideal for storage
- Back hip pocket with self-adhesive hook and loop closure keeps valuables secure
- 19" leg opening with 31" inseam

TRI-BLEND FABRIC: 72% polyester, 21% rayon, 7% spandex

Length & Sizes: **LENGTH:** 31" Average inseam / XS-4X;

28" Short inseam / XSSH-XLSH; 33" Tall inseam / XST-XLT

POCKETS: 2

STYLE # 2338





GROUP FRIENDLY



015 Black 054 New Navy 064 Royal 1004 Charcoal

011 White 1054 Pewter 046 Ceil 017 Teal 080 Caribbean *1045 Spruce/Hunter *1240 Plum berry/Wine 1031 Galaxy *016 Red *092 Eggplant

* only available in 2200 & 2338

Unisex jacket
FIT FOR WORK

**THE ULTIMATE
UNISEX
WARM-UP JACKET**

- Athletic inspired stand-up collar and snap front closure
- Two angled opening patch pockets to hold all your gear
- Soft, stretch color-matched knit cuffs

TRI-BLEND FABRIC:
72% polyester, 21% rayon,
7% spandex
LENGTH: 29"
POCKETS: 2
SIZES: XXS-5X
STYLE # 2373



015 Black	054 New Navy	064 Royal	1004 Charcoal	1045 Hunter/ Spruce
1054 Pewter	017 Teal	016 Red	1240 Plum berry/ Wine	046 Ceil
				011 White

Men's tech fleece jacket
ATTENTION TO DETAIL

**MEN'S TECH
FLEECE
JACKET**

- Athletic inspired collar and sleeve
- Full zipper closure with earbud holder zipper pull
- Two zipper closure pockets to secure all your gear

FLEECE:

92% polyester, 8% spandex

LENGTH: 28"

POCKETS: 2

SIZES: S-4X

STYLE # 2397



015
Black



054
New
Navy



1054
Pewter



EARBUD HOLDER
on zipper pull

PERFORMANCE RX®



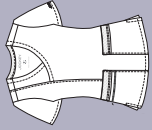
MOISTURE
WICKING



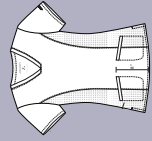
FOUR WAY
STRETCH



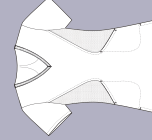
ANTIMICROBIAL
ODOR CONTROL



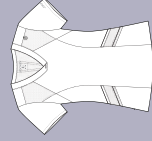
#2463
2 POCKETS
26" LENGTH
P. 18-19



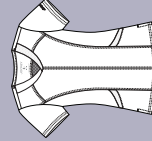
#2464
2 POCKETS
25" LENGTH
P. 16



#2436
2 POCKETS
25.5" LENGTH
P. 24-25



#2419
4 POCKETS
25" LENGTH
P. 20-21



#2441
2 POCKETS
25" LENGTH
P. 22-23

037
Jet
Black

054
New
Navy

064
Royal

1031
Galaxy
Blue

1231
Posh Pink

1263
Sea Blue

1004
Charcoal

015
Black

1107
Key Lime

1054
Pewter

017
Teal

046
Cell

1045
Spruce/
Hunter

1240
Plumberry/
Wine

XXS-3X

XXS-3X

XXS-3X

XXS-3X

XXS-3X

XXS-3X

XXS-3X

XXS-3X

XXS-3X

XXS-3X

XXS-3X

XXS-3X

XXS-3X

XXS-3X

XXS-3X

XXS-3X

XXS-3X

XXS-3X

XXS-3X

XXS-3X

XXS-3X

XXS-3X

XXS-3X

XXS-3X

XXS-3X

XXS-3X

XXS-3X

XXS-3X

XXS-3X

XXS-3X

XXS-3X

XXS-3X

XXS-3X

XXS-3X

XXS-3X

XXS-3X

XXS-3X

XXS-3X

XXS-3X

XXS-3X

XXS-3X

XXS-3X

XXS-3X

PERFORMANCE RX[®]



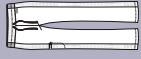
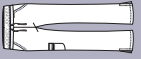



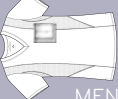

MOISTURE
WICKING



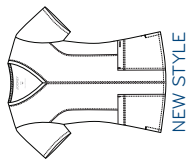
FOUR-WAY
STRETCH



ANTIMICROBIAL
ODOR CONTROL

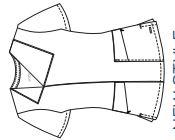
							
	#2466 1 POCKET 31.5" INSEAM P.17	#2421 5 POCKETS 32" INSEAM P. 28-29	#2422 2 POCKETS 32" INSEAM P. 32-33	#2428 3 POCKETS 32" INSEAM P. 30-31	#2408 0 POCKETS 25" LENGTH P. 26-27	#2412 2 POCKETS 28" LENGTH P. 34-35	#2413 4 POCKETS 31.5" INSEAM P.36-37
011 White					XXS-3X (SOLID)		
037 Jet Black	XXS-3X, XSP-3XP, XST-XLT	XXS-3X, XSP-3XP, XST-XLT	XXS-3X, XSP-3XP, XST-XLT	XXS-3X, XSP-3XP, XST-XLT		S-4X	S-4X, ST-XLT
054 New Navy	XXS-3X, XSP-3XP, XST-XLT	XXS-3X, XSP-3XP, XST-XLT	XXS-3X, XSP-3XP, XST-XLT	XXS-3X, XSP-3XP, XST-XLT	XXS-3X (SOLID)	S-4X	S-4X, ST-XLT
064 Royal	XXS-3X, XSP-3XP, XST-XLT	XXS-3X, XSP-3XP, XST-XLT	XXS-3X, XSP-3XP, XST-XLT	XXS-3X, XSP-3XP, XST-XLT	XXS-3X (HEATHERED)	S-4X	S-4X, ST-XLT
1031 Galaxy Blue	XXS-3X, XSP-3XP, XST-XLT	XXS-3X, XSP-3XP, XST-XLT	XXS-3X, XSP-3XP, XST-XLT	XXS-3X, XSP-3XP, XST-XLT		S-4X	S-4X, ST-XLT
1231 Posh Pink	XXS-3X, XSP-3XP, XST-XLT	XXS-3X, XSP-3XP, XST-XLT	XXS-3X, XSP-3XP, XST-XLT	XXS-3X, XSP-3XP, XST-XLT	XXS-3X (HEATHERED)		
1263 Sea Blue	XXS-3X, XSP-3XP, XST-XLT	XXS-3X, XSP-3XP, XST-XLT	XXS-3X, XSP-3XP, XST-XLT	XXS-3X, XSP-3XP, XST-XLT	XXS-3X (HEATHERED)		
1004 Charcoal	XXS-3X, XSP-3XP, XST-XLT	XXS-3X, XSP-3XP, XST-XLT	XXS-3X, XSP-3XP, XST-XLT	XXS-3X, XSP-3XP, XST-XLT		S-4X	S-4X, ST-XLT
015 Black					XXS-3X (SOLID)		
1107 Key Lime					XXS-3X (HEATHERED)		
1054 Pewter					XXS-3X (HEATHERED)		
017 Teal			XXS-3X, XSP-3XP, XST-XLT	XXS-3X, XSP-3XP, XST-XLT			
046 Cell			XXS-3X, XSP-3XP, XST-XLT	XXS-3X, XSP-3XP, XST-XLT			
1045 Spruce/ Hunter			XXS-3X, XSP-3XP, XST-XLT	XXS-3X, XSP-3XP, XST-XLT			
1240 Plumberry/ Wine			XXS-3X, XSP-3XP, XST-XLT	XXS-3X, XSP-3XP, XST-XLT			

LADIES' TOPS



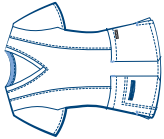
NEW STYLE

2448
2 POCKETS
26" LENGTH
P. 12-13

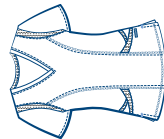


NEW STYLE

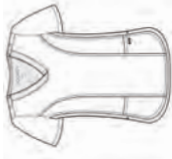
2468
4 POCKETS
26" LENGTH
P. 6-7



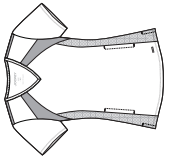
2309
3 POCKETS
25" LENGTH
P. 56-57



2329
3 POCKETS
25½" LENGTH
P. 50-51



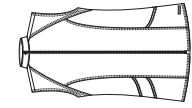
2401
2 POCKETS
25½" LENGTH
P. 48-49



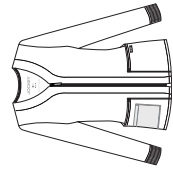
2403
2 POCKETS
25½" LENGTH
P. 44-45

011 White	XXS-5X	XXS-3X	XXS-5X	XXS-3X	XXS-3X	XXS-3X	XXS-3X	XXS-3X
015 Black	XXS-5X	XXS-3X	XXS-5X	XXS-3X	XXS-3X	XXS-3X	XXS-3X	XXS-3X
054 New Navy	XXS-5X	XXS-3X	XXS-5X	XXS-3X	XXS-3X	XXS-3X	XXS-3X	XXS-3X
064 Royal	XXS-5X	XXS-3X	XXS-5X	XXS-3X	XXS-3X	XXS-3X	XXS-3X	XXS-3X
092 Eggplant	XXS-5X	XXS-3X	XXS-5X	XXS-3X	XXS-3X	XXS-3X	XXS-3X	XXS-3X
Galaxy Blue	XXS-5X	XXS-3X	XXS-5X	XXS-3X	XXS-3X	XXS-3X	XXS-3X	XXS-3X
1054 Pewter	XXS-5X	XXS-3X	XXS-5X	XXS-3X	XXS-3X	XXS-3X	XXS-3X	XXS-3X
1107 Key Lime	XXS-5X	XXS-3X	XXS-5X	XXS-3X	XXS-3X	XXS-3X	XXS-3X	XXS-3X
1004 Charcoal	XXS-5X	XXS-3X	XXS-5X	XXS-3X	XXS-3X	XXS-3X	XXS-3X	XXS-3X
017 Teal	XXS-5X	XXS-3X	XXS-5X	XXS-3X	XXS-3X	XXS-3X	XXS-3X	XXS-3X
046 Ceil	XXS-5X	XXS-3X	XXS-5X	XXS-3X	XXS-3X	XXS-3X	XXS-3X	XXS-3X
1263 Sea Blue	XXS-5X	XXS-3X	XXS-5X	XXS-3X	XXS-3X	XXS-3X	XXS-3X	XXS-3X
1231 Posh Pink	XXS-5X	XXS-3X	XXS-5X	XXS-3X	XXS-3X	XXS-3X	XXS-3X	XXS-3X
016 Red	XXS-5X	XXS-3X	XXS-5X	XXS-3X	XXS-3X	XXS-3X	XXS-3X	XXS-3X
080 Caribbean	XXS-5X	XXS-3X	XXS-5X	XXS-3X	XXS-3X	XXS-3X	XXS-3X	XXS-3X
1045 Spruce/Hunter	XXS-5X	XXS-3X	XXS-5X	XXS-3X	XXS-3X	XXS-3X	XXS-3X	XXS-3X
1240 Plum Berry/Wine	XXS-5X	XXS-3X	XXS-5X	XXS-3X	XXS-3X	XXS-3X	XXS-3X	XXS-3X

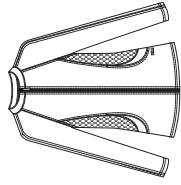
JACKETS
AND VEST



2458
ZIPPER
3 POCKETS
24 1/2" LENGTH
P. 58-59



2378
ZIPPER
3 POCKETS
28" LENGTH
P. 64-65



2383
2 POCKETS
26" LENGTH
P. 62-63



2399
3 POCKETS
25 1/2" LENGTH
P. 60-61

011 White

015 Black

016 Red

017 Teal

046 Cell

054 New Navy

064 Royal

080 Caribbean

122 Purple

1045
Spruce Hunter

1031
Galaxy Blue

1240
Plum Berry/Wine

1054 Pewter

1004 Charcoal

1262 Hibiscus

1263 Sea Blue

092 Eggplant

1231 Posh Pink

1107 Key Lime

XXS-5X

XXS-5X

XXS-5X

XXS-5X

XXS-5X

XXS-5X

XXS-5X

XXS-5X

XXS-3X

XXS-5X

XXS-3X

XXS-3X

XXS-3X

JOCKEY® SCRUBS MEASURE UP!



ATHLETIC FIT

PerformanceRX® Fit -
A cut that is more body conscious
Athletic inspired fit with fabrics
that keep you cool and moving.



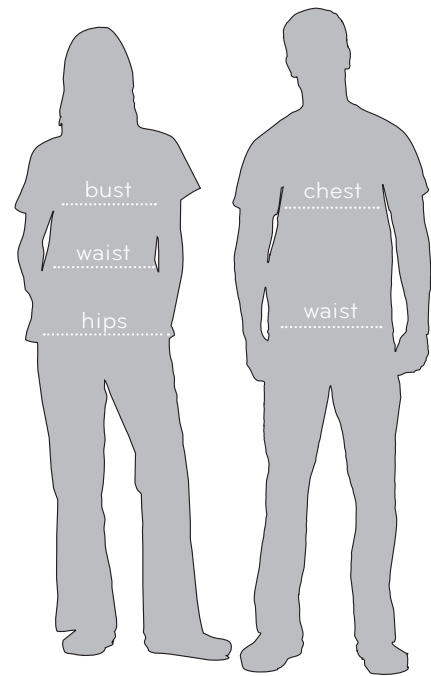
CLASSIC FIT

Classic Fit -
A traditional, relaxed cut.
Slightly longer center back
length and sleeve



MODERN FIT

Modern Fit -
A cut that sits closer to the body
without hugging. Slightly shorter
center back length and sleeve.



Fit tested and expertly crafted. So you look and feel your best all day long.

MEASURING BASICS

Bust & Chest: Place measuring tape under armpits and extend the tape around the broadest section of your chest.

Waist: Place tape around your natural waistline.

Hips: Stand with feet 2-4 inches apart and measure around the fullest part of your hips.

MODERN LADIES' SIZE CHART

	XXS	XS	S	M	L	XL	2X	3X
Size	0	2-4	6-8	10-12	14-16	18-20	20W-22W	24W-26W
Bust	30	32	34	37	41	44	48	52
Waist	22	24	26	29	32	36	40	44
Hips	32	34	36	39	43	47	51	54

CLASSIC LADIES' SIZE CHART

	XXS	XS	S	M	L	XL	2X	3X	4X	5X
Size	0	2-4	6-8	10-12	14-16	18-20	20W-22W	24W-26W	28W-30W	32W-34W
Bust	30-31	32-33	34-36	37-39	40-42	43-46	47-50	51-54	55-58	59-62
Waist	22-23	24-25	26-27	28-30	31-33	34-37	38-41	42-45	46-49	50-53
Hips	32-33	34-35	36-38	39-41	42-44	45-48	49-52	53-56	57-60	61-64

INSEAM CHART LADIES

	Standard	Petite	Tall
Inseam Length	31½"	29½"	33½"

INSEAM CHART MEN'S/UNISEX

	Standard	Short	Tall
Inseam Length	31½"	28"	33½"

MEN'S SIZE CHART

	XS	S	M	L	XL	2X	3X	4X
Men size (chest)	30-32	34-36	38-40	42-44	46-48	50-52	54-56	58-60
Men's waist	24-26	28-30	32-34	36-38	40-42	44-46	48-50	52-54

UNISEX SIZE CHART

	XS	S	M	L	XL	2X	3X	4X
Men size (chest)	30-32	34-36	38-40	42-44	46-48	50-52	54-56	58-60
Men's waist	24-26	28-30	32-34	36-38	40-42	44-46	48-50	52-54
Ladies' size	2-4	6-8	10-12	14-16	18-20	20W-22W	24W-26W	28W-30W



Follow us on social media:



[Facebook.com/JockeyScrubs](https://www.facebook.com/JockeyScrubs)



[Instagram.com/Jockey_Scrubs](https://www.instagram.com/Jockey_Scrubs)

INDEX

Performance RX

2408	27
2412	34
2413	37
2419	20
2421	29
2422	33
2428	30
2436	25
2441	23
2463	18
2464	16
2466	17

Performance RX Prints

2432	40
2433	38,39

Ladies' Tops & Jackets

2206	46
2299	42
2306	52
2309	57
2329	51
2339	54
2378	64

Ladies' Tops & Jackets

2383	63
2399	61
2401	49
2403	44
2448	12
2458	58
2461	78
2462	78
2468	7

Prints

2344	69
2366	68
2434	68

Ladies' Pants

2249	75
2250	10
2313	71
2358	73
2377	76
2453	13
2459	79
2467	9

Men's & Unisex

2200	82
2305	80
2338	82
2371	82
2373	84
2374	80
2397	85



JOCKEY.
SCRUBS

lit# RE18553



When you're done with this book, please recycle it. Thanks!



Like us on [Facebook.com/JockeyScrubs](https://www.facebook.com/JockeyScrubs) for special offers and giveaways.

