



JOCKEY[®]

SCRUBS

JANUARY 2019
Collection



JOCKEY

JOCKEY.
SCRUBS

JOCKEY

JOCKEY[®]

SCRUBS



JOCKEY[®] NEW PRODUCT

new product recap 6-8

LADIES' COLLECTIONS

ladies' tops 10 -27

ladies' jackets 28-29

ladies' pants 32-45

maternity top and pant 48-49

group top & pant 46-47

JOCKEY[®] PRINTS

ladies prints 30-31

MEN'S & UNISEX COLLECTION

men's top, pant & jacket 52-56

unisex tops, pant & jacket 57-59

PERFORMANCE RX[®] COLLECTION

embossed top & pant 62-63

ladies' tops 64-66

ladies' pants 67-69

men's top & pant 70-71

style & fit guide 72-79

color adds:

Style 2468 - Red-016

Style 2459 - Posh Pink-1231

Style 2461 - Posh Pink 1231





**JOGGER
PANT**



**3-IN-1
PANT**



A FIT CHOICE

these fresh mix of styles lets you find a comfortable look that's uniquely you.



FLATTERING FEATURES



NEW TOPS AND PRINTS



PG. 30-31



NEW PANT

PG.32

JOCKEY[®]

SCRUBS



JOCKEY



¼ ZIP DOUBLE DUTY TOP

¼ Zip neckline with tonal mesh lining. Athletic inspired drop back V neckline. Front and back princess seams for ultimate fit. Two top loading pockets with one secure zipper pocket. Side vents for easy all-day movement.

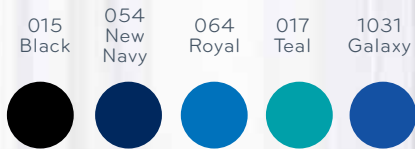
TRI-BLEND FABRIC:

72% polyester, 21% rayon, 7% spandex

POCKETS: 3

SIZES: XXS-5X

STYLE # 2471



CLASSIC FIT



A-ROUND THE CLOCK COMFORT TOP

Rounded v-neck detail gives an updated look to a traditional neckline. Princess seam with two curved top loading pockets and one signature zipper pocket. Side seam vents for easy all-day movement

TRI-BLEND FABRIC:

72% polyester, 21% rayon, 7% spandex

POCKETS: 3

SIZES: XXS-5X

STYLE # 2473

1231
Posh
Pink



011
White



015
Black



054
New
Navy



064
Royal



1004
Charcoal



1031
Galaxy







CLASSIC FIT



PERFECT PLACKET TOP

Placket neckline for an updated professional look. Two top loading angled welt pockets. Side vents for easy all-day movement

TRI-BLEND FABRIC:
72% polyester, 21% rayon,
7% spandex
POCKETS: 3
SIZES: XXS-3X
STYLE # 2474

- | | | | |
|---|---|---|---|
| 015 Black | 054 New Navy | 064 Royal | 1004 Charcoal |
|  |  |  |  |

FLEX GEN 2 TOP

Asymmetrical princess seam mock wrap neckline. Two deep, top loading pockets with Jockey® branded elastic tool tape. Side-seam vents for easy all-day movement.

TRI-BLEND FABRIC:

72% polyester, 21% rayon, 7% spandex

LENGTH: 26"

POCKETS: 2

SIZES: XXS-3X

STYLE # 2475



MODERN FIT

NOW IN TRI-BLEND & PERFORMANCE RX

- 015 Black
- 054 New Navy
- 064 Royal
- 1004 Charcoal
- 1031 Galaxy



Want to complete the look? Turn to pg. 32 for the Amazing Comfort pant

THE FAVORITE V-NECK TOP

Unique v-neck styling offers a feminine touch. Two top loading pockets with a signature zippered pocket for added security. Side seam hem venting for easy all-day movement.

TRI-BLEND FABRIC:

72% polyester, 21% rayon, 7% spandex

LENGTH: 27"

POCKETS: 3

SIZES: XXS-5X

STYLE # 2206



**NURSES
FAVORITE**



Signature zipper keeps you secure
A TOP WITH REAL ZIP

NECKLINE
 comfort and
 flattering v-neck



ZIP POCKETS
 for safe and
 convenient storage

- | | | | | | | | | | |
|--------------|--------------------|---------------|------------------|----------------|----------------------|--------------------------------|---------------------------|----------------------|------------------|
| 015 Black | 054 New Navy | 064 Royal | 1004 Charcoal | 1031 Galaxy | 1231 Posh Pink | 016 Red | 080 Caribbean | 092 Egg- plant | 1262 Hibiscus |
| | | | | | | | | | |
| 011 White | 1054 Pewter | 122 Purple | 017 Teal | 046 Ceil | 1263 Sea Blue | 1240 Plum berry/ Wine | 1045 Spruce/ Hunter | 1107 Key Lime | |
| | | | | | | | | | |

THE COOL MESH V-NECK

THE COOL MESH SHIRTTAIL TOP

Curved mesh v-neck and center mesh panel on back for all-day comfort and breathability. Princess lines for a more flattering fit. Shirrtail hem with mesh trimmed edge for an athletic inspired look.

TRI-BLEND FABRIC:

72% polyester, 21% rayon, 7% spandex

MESH: 100% polyester

LENGTH: 25½"

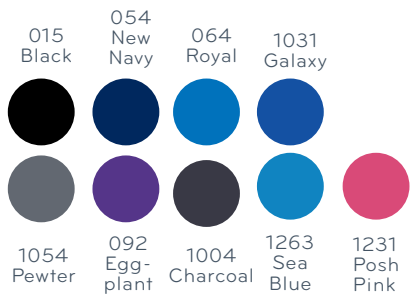
POCKETS: 2

SIZES: XXS-3X

STYLE # 2401



MODERN FIT





THE PERFECT MESH

MESHABILITY MODERN TOP

T-shirt inspired v-neck creates comfort and style. Strategically placed mesh around arm and back of neck gives you a breathable feeling. Curved hem pockets with mesh trim detail. Front and back princess seams for a flattering fit.

TRI-BLEND FABRIC:

72% polyester, 21% rayon, 7% spandex

MESH: 100% polyester

LENGTH: 25½"

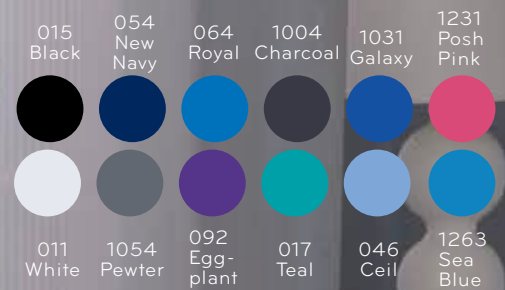
POCKETS:3

SIZES: XXS-3X

STYLE # 2329



MODERN FIT



INNOVATIVE BREATHABLE MESH

we know what matters
FIT TO FLATTER



BUNGEE CORD
quick badge
attachment

LARGE POCKETS
with signature zipper to
keep your valuables secure

**HIDDEN POCKET
INSIDE**

CURVES AHEAD MOCK WRAP TOP

Clean-finished mock wrap neckline with princess seaming for a universally flattering fit. Forward shoulder seam ID badge loop keeps your ID secure. Unique top loading pockets with two additional signature zippered pockets on top and one hidden media pocket. Side seam hem venting for easy all-day movement.

TRI-BLEND FABRIC:
72% polyester, 21% rayon, 7% spandex
LENGTH: 26"
POCKETS: 5 (1 hidden)
SIZES: XXS-5X
STYLE # 2306





- | | | | | | |
|------------------|--------------------|---------------------------|--------------------------------|----------------|----------------------|
| 122 Purple | 046 Ceil | 017 Teal | 1240 Plum berry/ Wine | | |
| 080 Caribbean | 016 Red | 1045 Spruce/ Hunter | 011 White | 1054 Pewter | |
| 015 Black | 054 New Navy | 064 Royal | 1004 Charcoal | 1031 Galaxy | 1231 Posh Pink |

**GROUP
FRIENDLY**



wear
with

Want to complete the look?
Turn to pg. 37 for the
favorite fit pant

Side zippers keeps you secure
A TOP WITH REAL ZIP



BUNGEE CORD
 quick badge attachment

TOP POCKETS
 deep top pockets for loading up

ZIP POCKETS
 for safe storage and convenient storage

SIDE VENTS
 make movement easy

TRUE FIT CROSSOVER V-NECK TOP

High crossover neckline creates an updated v-neckline. Front yoke ID badge loop keeps your ID secure. Unique four pocket design has two top loading on-seam pockets with two side entry signature zippered pockets. Side vents for ease of movement.

TRI-BLEND FABRIC:

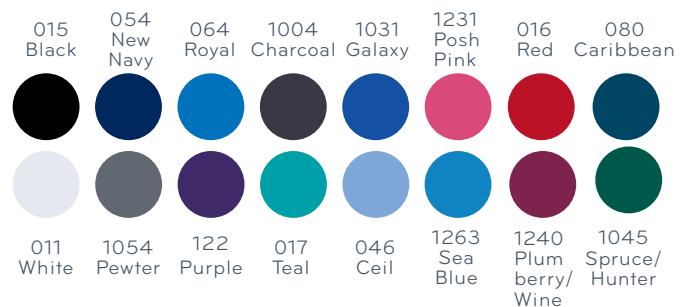
72% polyester, 21% rayon, 7% spandex

LENGTH: 26"

POCKETS: 4

SIZES: XXS-5X

STYLE # 2299



AN ESSENTIAL PIECE FOR BUILDING YOUR WARDROBE



1262-Hibiscus/Pewter



016-Red/Black



1054-Pewter/PoshPink



122-Purple/Pewter



054-New Navy/Teal



1263-Sea Blue/Charcoal



015-Black/Royal



064-Royal/Black



SPORTY V-NECK TOP

Princess seams are attractively accented with contrast piping. Two pockets emphasized with double-needle contrast topstitching. Contrast band found inside shirttail hem. No side venting for a sporty look.

TRI-BLEND FABRIC:

72% polyester, 21% rayon, 7% spandex

LENGTH: 26"

POCKETS: 2

SIZES: XXS-5X

STYLE # 2339



CLASSIC FIT

Multi-color details

SPORTY MESH PANEL V-NECK



017 Teal
w/New Navy
contrast
& Pewter mesh

054 New Navy
w/Ceil contrast
& Pewter mesh



1263 Sea Blue
w/Black contrast
& Charcoal mesh

092 Eggplant
w/Black contrast
& Pewter mesh



064 Royal
w/Lime contrast
& Black mesh

011 White
w/Black contrast
& Pewter mesh



1231 Posh Pink
w/Black contrast
& Pewter mesh

015 Black
w/White contrast
& Pewter mesh



SPORTY MESH PANEL V-NECK TOP

T-shirt inspired v-neck top is soft to the touch. Contrast tri-blend panels on front and back for athletic inspired look. Contrast mesh side panels to keep you cool and comfortable.

- TRI-BLEND FABRIC:**
72% polyester, 21% rayon, 7% spandex
- MESH:** 100% polyester
- LENGTH:** 25½"
- POCKETS:** 2
- SIZES:** XXS-3X
- STYLE #** 2403





THE MODERN V-NECK TOP

Flattering v-neck top features contrast back neck facing and bartacks. Front and back princess lines and T-shaped back yoke offer feminine touches. Double patch pockets plus one security pocket with zipper. Side seam hem venting means easy all-day movement.

TRI-BLEND FABRIC:

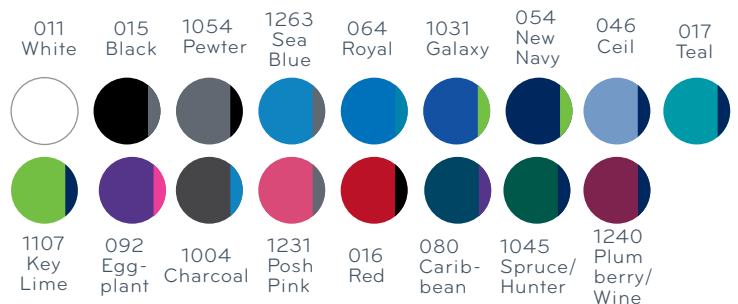
72% polyester, 21% rayon, 7% spandex

LENGTH: 25"

POCKETS: 3

SIZES: XXS-5X

STYLE # 2309



Want to complete the look? Turn to pg. 35 for the **3-IN-1 CONVERTIBLE PANT**.



**MODERN
V-NECK**





THE EDGE OF GREATNESS TOP

Asymmetrical v-neckline gives this top a fun and modern feel. Two top loading pockets with two signature zippered pockets on top to hold all your gear. Angled back yoke and asymmetrical princess seam detail. Side-seam hem venting for easy all-day movement.

TRI-BLEND FABRIC:
72% polyester, 21% rayon, 7% spandex
LENGTH: 26"
POCKETS: 4
SIZES: XXS-3X
STYLE # 2468

- 016 Red
 - 046 Ceil
 - 011 White
 - 015 Black
 - 054 New Navy
 - 064 Royal
 - 1004 Charcoal
 - 1031 Galaxy
-

SNAP TO IT WARM-UP JACKET

Round neckline with color matching cap snap closure. Front and back princess seams with two top loading, roomy pockets and hidden media pocket. Soft, stretch color matched knit cuffs.

TRI-BLEND FABRIC:

72% polyester, 21% rayon, 7% spandex

LENGTH: 28"

POCKETS: 3

SIZES: XS-5X

STYLE # 2356



- | | | | |
|---------------------------------|--|--|-------------------|
| 011 White | | | 015 Black |
| 1054 Pewter | | | 054 New Navy |
| 122 Purple | | | 064 Royal |
| 046 Ceil | | | 1004 Charcoal |
| 017 Teal | | | 1031 Galaxy |
| 016 Red | | | 1231 Posh Pink |
| 1045 Spruce/ Hunter | | | 080 Caribbean |
| 1240 Plum- berry/ Wine | | | |



TECH FLEECE JACKET

Athletic inspired fit with princess seams and stand-up collar. Full zipper closure with earbud holder on zipper. Two front pockets and one hidden zipper pocket on back to secure your items.

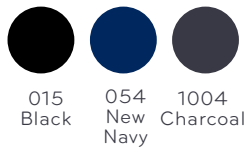
FLEECE: 92% polyester, 8% spandex

LENGTH: 25 1/2"

POCKETS: 3

SIZES: XXS-3X

STYLE # 2399



RIVETING WARM-UP JACKET

Rounded v-neck with zipper closure. Soft, stretch color-matched knit cuffs. Roomy patch pockets with rivet detail and hidden media pocket.

TRI-BLEND FABRIC:

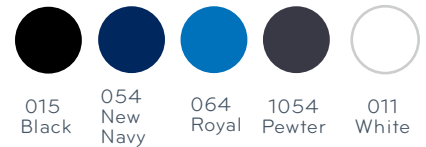
72% polyester, 21% rayon, 7% spandex

LENGTH: 28"

POCKETS: 3

SIZES: XXS-5X

STYLE # 2378





Botanica -2450

wear with:

*Posh pink -1231 White - 011
Royal - 064 Galaxy Blue 1031*



Abstraction -2454

wear with:

*Posh pink -1231 White - 011
New Navy- 054 Ceil - 046*

NEW PRINTS



PRINTED V-NECK TOP

Unique v-neck design with contrast piping adds individual style. Two deep patch pockets plus mobile device pocket. Side vents for all-day movement.

SOFT-STRETCH PRINT FABRIC:
96% polyester, 4% spandex, soft-stretch fabric

POCKETS: 3

SIZES: XXS-5X

STYLE # 2472



CLASSIC FIT



Frolic -2452

wear with:

*Posh pink - 1231 Royal - 064
New Navy - 054 Pewter - 1054
Hibiscus - 1262*



AMAZING COMFORT PANT

Jockey® branded exposed elastic waist pant with elasticized Jockey® tie. Two angled hip pockets, plus two back welt pockets and a side cargo with elastic tool tape to store your gear. Side leg vent. 16" tapered leg opening with 32" inseam.

TRI-BLEND FABRIC:

72% polyester, 21% rayon, 7% spandex

POCKETS: 5

SIZES: XXS-3X, XSP-3XP, XST-SLT

STYLE # 2411



MODERN FIT

015 Black 054 New Navy 064 Royal



1004 Charcoal 1031 Galaxy





**NOW IN TRI-BLEND &
PERFORMANCE RX**

Wear it your way

3-IN-1 PANT



TRADITIONAL



**FLAT
FRONT**



**YOGA
INSPIRED**

THE 3-IN-1 CONVERTIBLE PANT

Convertible drawstring waist lets you choose between mid-rise and low-rise. Tie on the outside for a traditional look, the inside for a tailored look and flip it down for a sportier look. Triple-colored waistband offers versatility. Cover-stitch details create a sporty look. 18" leg opening, straight leg inseam 31½".

TRI-BLEND FABRIC:

72% polyester, 21% rayon, 7% spandex

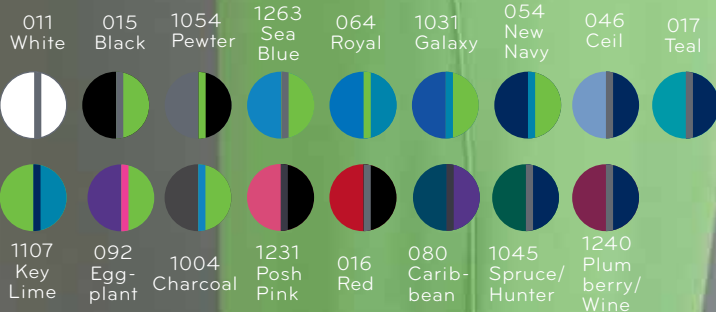
POCKETS: 3

SIZES: XXS-5X; XXSP-3XP; XST-XLT

STYLE # 2313



MODERN FIT



BEST SELLING PANT





THE FAVORITE FIT PANT

Half elastic back and half drawstring front for maximum comfort. Two front angled pockets plus cargo with signature zipper pocket offer incredible security and storage. Side vents for ease of movement. 19" leg opening with a slight flare 31" inseam.

TRI-BLEND FABRIC:

72% polyester, 21% rayon, 7% spandex

SIZES: XXS-5X, XXSP-2XP, XST-XLT

POCKETS: 4

STYLE # 2249



CLASSIC FIT

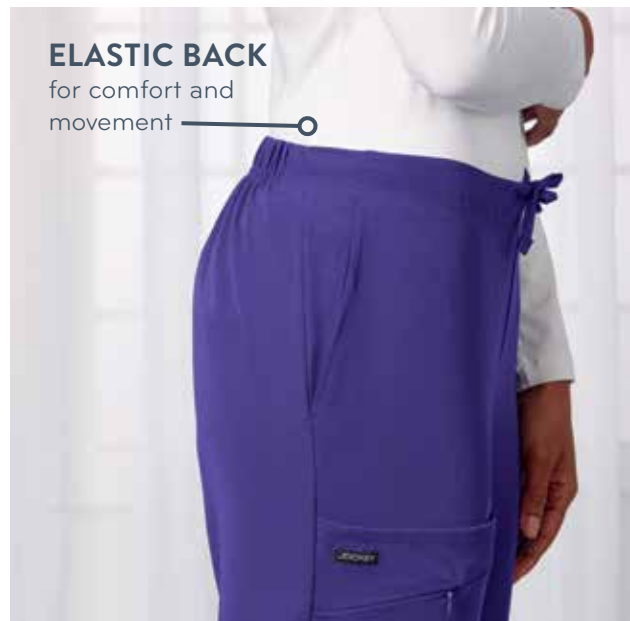
DRAWSTRING

for perfect fit



ELASTIC BACK

for comfort and movement



CARGO POCKET

with signature zip pocket for safe storage





THESE PANTS CAN KEEP UP



THE EVERYDAY JOGGER PANT

Flat front full elastic waistband for ultimate comfort. Fully covered elastic jogger ankle gives a sporty, but professional look every day. Two front angled hip pockets and two angled on-seam back hip pockets will hold everything you need. 11" elastic leg opening with 31" inseam.

TRI-BLEND FABRIC

72% polyester, 21% rayon, 7% spandex

SIZES: XXS-3X, XSP-3XP, XST-XLT

POCKETS: 4

STYLE # 2467



MODERN FIT



JOCKEY

Stretch to perfection

THE YOGA MOVEMENT

SOFT COMFORT YOGA PANT

Contoured yoga waistband gently hugs and flatters. Secure side leg welt pocket creates an uncomplicated look. 19" leg opening with a straight leg 31" inseam.

TRI-BLEND FABRIC:

72% polyester, 21% rayon, 7% spandex

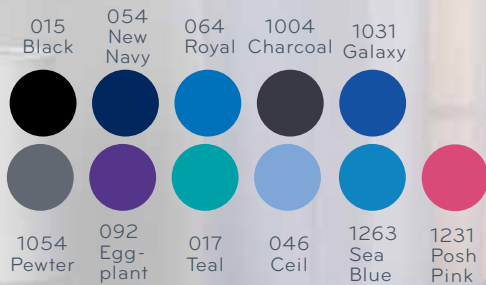
POCKETS: 1

SIZES: XXS-2X, XXSP-XLP, XXST-XLT

STYLE # 2358



MODERN FIT



Striding for perfection

EXTREME COMFY PANT

EXTREME COMFY PANT

Relaxed fit and slightly flared leg to ensure the ultimate comfort. Full elastic waist design with drawstring closure. Multi-pockets all in front for all-day functionality and lots of storage options. Vented leg openings for ease of movement. 18" leg opening with 31" inseam.

TRI-BLEND FABRIC:

72% polyester, 21% rayon, 7% spandex

SIZES: XXS-5X, XXSP-2XP, XST-XLT

POCKETS: 4

STYLE # 2377



CLASSIC FIT

FULL ELASTIC WAIST

with drawstring closure



MULTI-POCKET

for functionality and security

| | | | | | | | |
|--------------|-----------------|--------------|------------------|-----------------------|-------------------|------------------|-------------------------|
| 015 Black | 054 New Navy | 064 Royal | 1004 Charcoal | 1031 Galaxy | 1231 Posh Pink | 016 Red | 080 Caribbean |
| 011 White | 1054 Pewter | 046 Ceil | 017 Teal | 1045 Spruce/Hunter | 122 Purple | 1263 Sea Blue | 092 Egg-plant |
| | | | | | | | 1240 Plum berry/Wine |



SOLID ILLUSION® PANT

Subtle hint of print using Solid Illusion® Geo Tech pattern to give you a fun pop of style. Half elastic back and half drawstring front for maximum comfort. Two front angled pockets plus cargo with additional signature zipper pocket offer incredible security and storage. Slight flare. Side vents for ease of movement. 19" leg opening with 3 1/2" inseam.

TRI-BLEND SOLID ILLUSION®

FABRIC:

72% polyester, 21% rayon, 7% spandex

POCKETS: 4

SIZES: XXS-5X, XXSP-2XP, XST-XLT

STYLE # 2250



CLASSIC FIT



015
Black



054
New
Navy



064
Royal

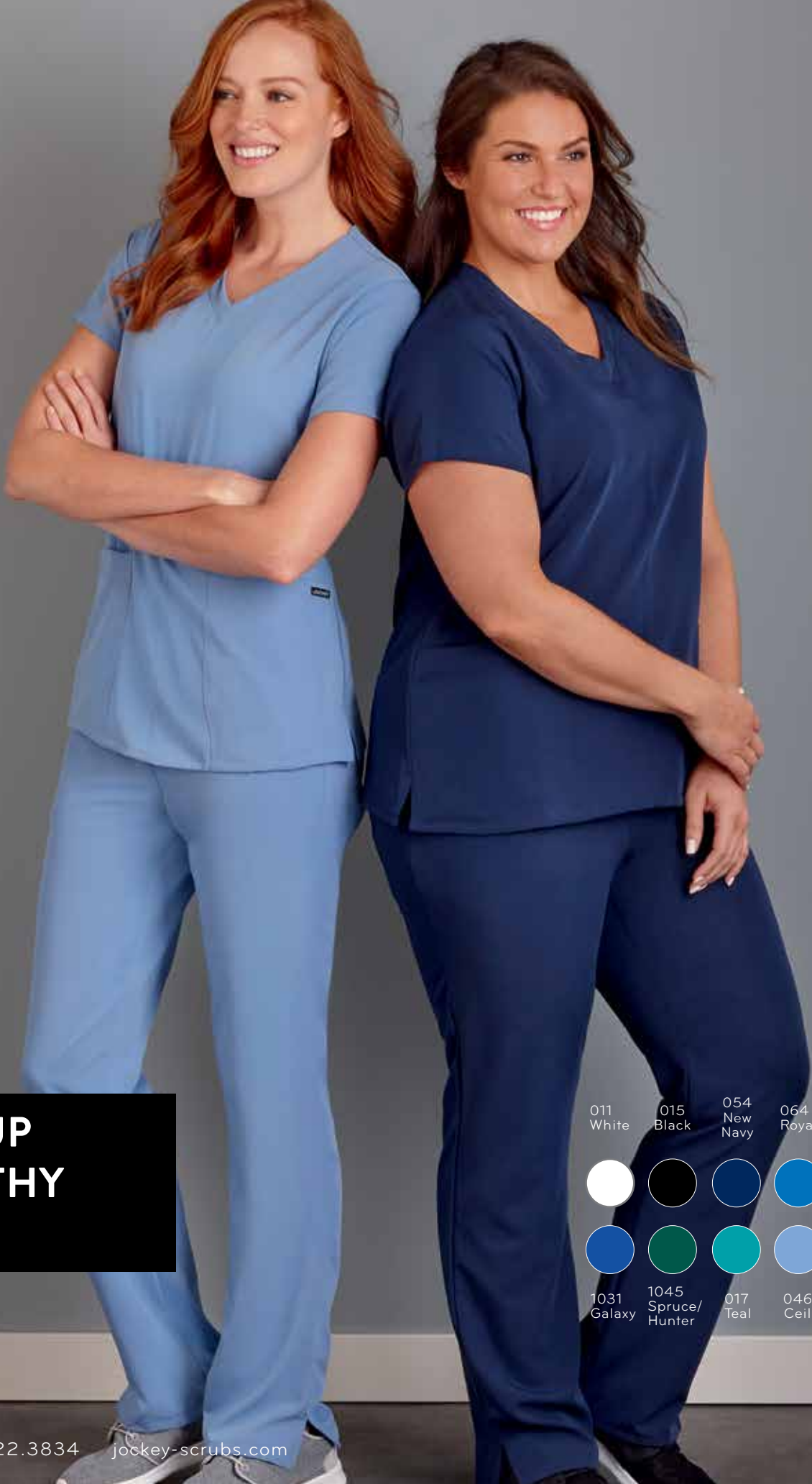


1054
Pewter



122
Purple





GROUP WORTHY PANT

- | | | | | | |
|---|---|---|---|---|---|
| 011 White | 015 Black | 054 New Navy | 064 Royal | 1004 Charcoal | 1054 Pewter |
|  |  |  |  |  |  |
| 1031 Galaxy | 1045 Spruce/ Hunter | 017 Teal | 046 Ceil | 1240 Plumberry/ Wine | |
|  |  |  |  |  | |



GREAT FOR GROUPS PANT

1" soft comfort pull on full elastic waist pant. Stylish tapered straight leg design with side vents. Two curved front hip pockets. 16" leg opening with 31 ½" inseam.

TRI-BLEND FABRIC:

72% polyester, 21% rayon, 7% spandex

SIZES: XXS-5X, XSP-XLP, XST-XLT

POCKETS: 2

STYLE # 2453



GREAT FOR GROUPS TOP

Soft v-neck with triple needle stitching down front and across pocket tops. Princess seams fit to flatter everyone. Two roomy top-loading pockets to hold all your gear. Side-seam hem vents for easy all-day movement.

TRI-BLEND FABRIC:

72% polyester, 21% rayon, 7% spandex

LENGTH: 26"

POCKETS: 2

SIZES: XXS-5X

STYLE # 2448

EMPIRE WAIST MATERNITY TOP

Keyhole neckline detail offers a feminine touch. Empire waist with adjustable back ties gives a customizable fit. Two front patch pockets to hold your gear.

TRI-BLEND FABRIC:

72% polyester, 21% rayon, 7% spandex

LENGTH: 26 ½"

POCKETS: 2

SIZES: XS-3X

STYLE # 2461



PLEATED BACK MATERNITY TOP

T-shirt inspired v-neck for an on trend look. Deep side entry front pockets store your gear out of the way. Sporty pleated back allows room for growing tummies.

TRI-BLEND FABRIC:

72% polyester, 21% rayon, 7% spandex

LENGTH: 26 ½"

POCKETS: 2

SIZES: XS-3X

STYLE # 2462

** Not available in Posh Pink*



THE ULTIMATE MATERNITY PANT

Pure comfort front and back stretch panel. Two front and two back hip pockets. Mock fly detail. Side vents for ease of movement. 16" leg opening with 3 1/2" inseam.

TRI-BLEND FABRIC:

72% polyester, 21% rayon, 7% spandex

SIZES: XS-3X

POCKETS: 4

STYLE # 2459



MATERNITY COLLECTION

- | | | | | |
|---------------------------|-----------------|--------------|--------------------------------|----------------|
| 015 Black | 054 New Navy | 064 Royal | 1004 Charcoal | 1031 Galaxy |
| | | | | |
| 1045 Spruce/ Hunter | 017 Teal | 046 Ceil | 1240 Plum berry/ Wine | |
| | | | | |

* Posh Pink only available in styles 2461 & 2459

A photograph of men's scrubs. On the right, a pair of blue scrubs pants with an elastic waistband and a drawstring. A pair of blue-handled scissors is tucked into the front pocket. A small black label with the word "JOCKEY" in white is visible on the right leg. On the left, a pair of maroon scrubs pants is folded, showing the waistband with "JOCKEY" printed in white. The background is a light-colored wooden surface.

MEN'S ESSENTIAL FIT COLLECTION

Everyday comfort essentials in men's scrubs with fabrics that are easy-care, just wash-dry-wear! It's that easy!

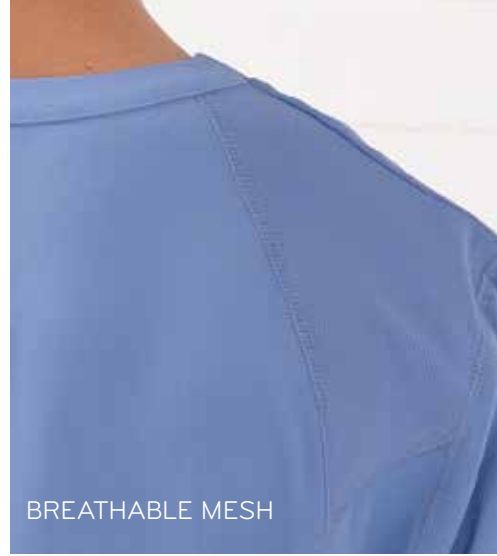
JOCKEY



A full-body photograph of a man with dark hair and a light beard, smiling and leaning against a white brick wall. He is wearing a light blue V-neck short-sleeved scrub top with a chest pocket and matching light blue scrub pants. He is also wearing dark blue sneakers with white soles. The background is a white brick wall with a window on the left side. A black rectangular box with white text is overlaid on the left side of the image.

**INNOVATIVE
BREATHABLE
MESH**

Comfort and functionality together
Men's classic fit collection



MEN'S MESH TOP

Breathable mesh shoulder panels to keep you cool and comfortable. Reflective tape on back for athletic look. Sporty v-neck for all day comfort. Chest pocket to store your personal items.

TRI-BLEND FABRIC:

72% polyester, 21% rayon, 7% spandex

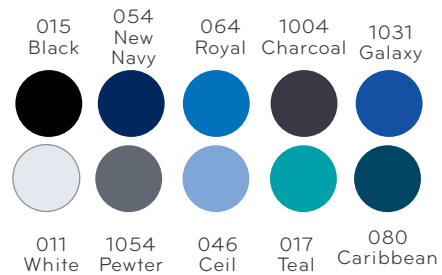
MESH FABRIC: 100% polyester

LENGTH: 28"

POCKETS: 1

SIZES: XS-4X

STYLE # 2374



Comfort and functionality together

Men's classic fit collection



ADJUSTABLE
WAISTBAND



DEEP ZIPPERED
POCKETS

MEN'S EVERYTHING PANT

Adjustable waistband with full elastic and inside drawstring for maximum comfort. Fully functional zipper fly, five belt loops and two front-side slash pockets. Right cargo pocket features inside phone pocket, and left divided cargo pocket for pens and instruments. Two secure, back-zippered welt pockets with inside bags hold wallet and phone on the inside. 19" leg opening, straight leg inseam 31".

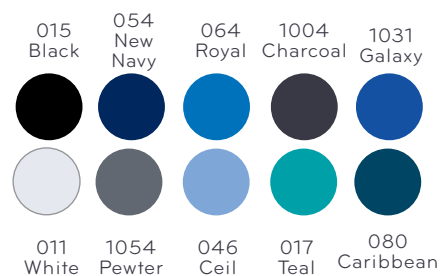
TRI-BLEND FABRIC:

72% polyester, 21% rayon, 7% spandex

POCKETS: 7

SIZES: XS-4X; XSSH-XLSH; SST-XLT

STYLE # 2305





POCKETS ON POCKETS

Men's tech fleece jacket
ATTENTION TO DETAIL



EARBUD HOLDER
on zipper pull

MEN'S TECH FLEECE JACKET

Athletic inspired collar and sleeve. Full zipper closure with earbud holder zipper pull. Two zipper closure pockets to secure all your gear.

FLEECE:

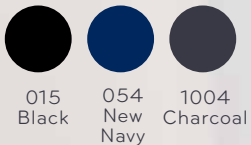
92% polyester, 8% spandex

LENGTH: 28"

POCKETS: 2

SIZES: S-4X

STYLE # 2397



015
Black

054
New
Navy

1004
Charcoal

THE ULTIMATE UNISEX WARM-UP JACKET

Athletic inspired stand-up collar and snap front closure. Two angled opening patch pockets to hold all your gear. Soft, stretch color-matched knit cuffs.

TRI-BLEND FABRIC:

72% polyester, 21% rayon, 7% spandex

LENGTH: 29"

POCKETS: 2

SIZES: XXS-5X

STYLE # 2373



THE BEST UNISEX PANT

The newest unisex pant in the industry. Full drawstring tie-waist has back elastic for maximum adjustability and comfort. Slimmer silhouette flatters both men and women. Deep cargo pocket on thigh is ideal for storage. Back hip pocket with self-adhesive hook and loop closure keeps valuables secure. 19" leg opening with 31" inseam.

TRI-BLEND FABRIC:

72% polyester, 21% rayon, 7% spandex

LENGTH & SIZES:

LENGTH: 31" Average inseam / XS-4X;

28" Short inseam / XSSH-XLSH;

33" Tall inseam / XST-XLT

POCKETS: 2

STYLE # 2338

- 011 White
- 015 Black
- 064 Royal
- 046 Ceil
- 080 Caribbean
- *1240 Plum berry/Wine
- *016 Red
- 1054 Pewter
- 054 New Navy
- 1004 Charcoal
- 017 Teal
- 1031 Galaxy
- *1045 Spruce/Hunter
- *092 Eggplant

* only available in 2200 & 2338



Unisex set

DESIGNED FOR THE GROUP IN MIND



FOUR POCKET UNISEX TOP

Banded v-neck design for a classic, professional look. Forward dropped shoulder with badge loop for maximum comfort. Four pockets for all your gear. Side vents allow for easy mobility.

TRI-BLEND FABRIC:

72% polyester, 21% rayon, 7% spandex

LENGTH: 28"

POCKETS: 4

SIZES: XS-4X

STYLE # 2371



ONE POCKET UNISEX TOP

Banded v-neck design for a classic, professional look. Classic front and back shoulder yoke detailing. Topstitching details provide extra strength and style. Chest pocket stores personal items. Side vents allow for easy mobility.

TRI-BLEND FABRIC:

72% polyester, 21% rayon, 7% spandex

LENGTH: 28" (M)

POCKETS: 1

SIZES: XS-4X

STYLE # 2200

JOCKEY.
SIZE
- S -
Made in Mexico

JOCKEY



MOISTURE
WICKING



FOUR-WAY
STRETCH



ANTIMICROBIAL
ODOR CONTROL



JOCKEY

PERFORMANCE RX[®]

Premier performance collection designed to keep up with you in any condition. Athletic inspired fit with fabrics that help you keep cool, comfortable & odor free in any activity.



EMBOSSED SIDE PANEL TOP

T-shirt styled v-neckline with embossed panel in back neck. Two top loading welt pockets made to hold all your gear. Embossed front and back side panels. Move-with-you side vents. Reflective Jockey® logo.

93% polyester / 7% spandex
Four-Way Stretch Moisture Wicking
Fabric with Antimicrobial Odor
Control Technology

LENGTH: 25"

POCKETS: 2

SIZES: XXS-3X

STYLE # 2464



MOISTURE
WICKING



FOUR-WAY
STRETCH



ANTIMICROBIAL
ODOR CONTROL

EMBOSSED SIDE PANEL PANT

Flat front full elastic embossed waistband with Jockey® branded elasticized tie. Side leg cargo pocket set in the embossed side panel. Back facing action vent. Reflective Jockey® Logo. 16" tapered leg opening with 31 ½" inseam.

93% polyester / 7% spandex

Four-Way Stretch Moisture Wicking Fabric with Antimicrobial Odor Control Technology

POCKETS: 1

SIZES: XXS-3X, XSP-3XP, XST-XLT

STYLE # 2466



| | | | | | | |
|---------------------|--------------------|--------------|------------------|----------------|----------------------|---------------------|
| 037 Jet Black | 054 New Navy | 064 Royal | 1004 Charcoal | 1031 Galaxy | 1231 Posh Pink | 1263 Sea Blue |
|---------------------|--------------------|--------------|------------------|----------------|----------------------|---------------------|



MOISTURE
WICKING



FOUR-WAY
STRETCH



ANTIMICROBIAL
ODOR CONTROL



SIDE DETAIL

ALL DAY COMFORT

MAKE YOUR MOVE TOP

Shaped v-neckline with angled yoke and badge loop made to move with you. Double angled pockets will hold all your gear. Athletic inspired Y-stripe back detail. Move-with-you side vents. Reflective Jockey® logo.

93% polyester / 7% spandex
Four-Way Stretch Moisture Wicking
Fabric with Antimicrobial Odor
Control Technology

LENGTH: 25"

POCKETS: 4

SIZES: XXS-3X

STYLE # 2419



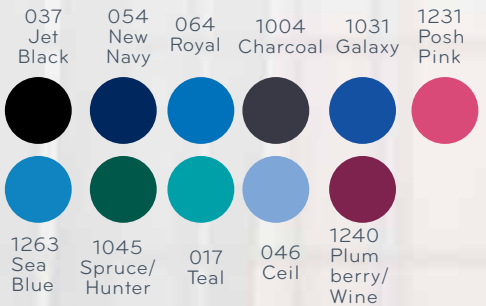
MOISTURE
WICKING



FOUR-WAY
STRETCH



ANTIMICROBIAL
ODOR CONTROL





MOISTURE WICKING



FOUR-WAY STRETCH



ANTIMICROBIAL ODOR CONTROL



ACROSS PERFORMANCE TOP

T-Shirt styled v-neckline created to be comfy and cool. On seam top loading pockets made to hold all your gear. Athletic inspired crisscross back detail. Move-with-you side vents. Reflective Jockey® logo.

93% polyester / 7% spandex
Four-Way Stretch Moisture Wicking Fabric with Antimicrobial Odor Control Technology

LENGTH: 25 1/2"

POCKETS: 2

SIZES: XXS-3X

STYLE # 2436

- | | | | |
|---------------------|----------------------|---------------------|------------------|
| 037 Jet Black | 054 New Navy | 064 Royal | 1004 Charcoal |
| | | | |
| 1031 Galaxy | 1231 Posh Pink | 1263 Sea Blue | |
| | | | |





015
Black

054
New Navy

011
White

1107
Key Lime

064
Royal

1231
Posh Pink

1263
Sea Blue



MOISTURE
WICKING



FOUR-WAY
STRETCH



DRY COMFORT TEE

Rounded comfort collar with set in sleeves. Athletic inspired X back detail. Hi-low shirrtail hem.

95% polyester / 5% spandex
silk touch moisture wicking
fabric

LENGTH: 25"

POCKETS: 0

SIZES: XXS-3X

STYLE # 2408



AH-MAZING MOVEMENT PANT

Jockey® branded exposed elastic waist pant with elasticized Jockey® tie. Two angled hip pockets, plus two back welt pockets and a side cargo with elastic tool tape to store your gear. Side facing action vent. Reflective Jockey® logo. 16" tapered leg opening with 32" inseam.

93% polyester / 7% spandex

Four-Way Stretch Moisture Wicking Fabric with Antimicrobial Odor Control Technology

POCKETS: 5

SIZES: XXS-3X, XSP-3XP, XST-XLT

STYLE # 2421



ANTIMICROBIAL
ODOR CONTROL



FOUR-WAY
STRETCH



MOISTURE
WICKING



COMFORT BAND



STORE YOUR GEAR
IN STYLE



GET-UP-AND-GO PANT

Textured half elastic pant with full tonal twill tape tie and curve hugging back yoke. Two angled hip pockets and one generous angled cargo pocket to store your gear. Forward facing action leg vent. Reflective Jockey® logo. 16" tapered leg opening with 32" inseam

93% polyester / 7% spandex
 Four-Way Stretch Moisture Wicking Fabric with Antimicrobial Odor Control Technology

SIZES: XXS-3X, XSP-3XP, XST-XLT

POCKETS: 3

STYLE# 2428



MOISTURE WICKING



FOUR-WAY STRETCH



ANTIMICROBIAL ODOR CONTROL

| | | | |
|---------------------|--------------------|--------------|------------------|
| 037 Jet Black | 054 New Navy | 064 Royal | 1004 Charcoal |
|---------------------|--------------------|--------------|------------------|



| | | |
|----------------|----------------------|---------------------|
| 1031 Galaxy | 1231 Posh Pink | 1263 Sea Blue |
|----------------|----------------------|---------------------|



MOISTURE WICKING



FOUR-WAY STRETCH



ANTIMICROBIAL ODOR CONTROL

ZEN PANT

Hidden *Be Bold* message in waistband. Maximum comfort waistband to keep your Namaste all day. Sleek side hip secured zipper pockets with texture angled panels. Forward facing action leg vent. Reflective Jockey® logo. 16" tapered leg opening with 32" inseam.

93% polyester / 7% spandex Four-Way Stretch
Moisture Wicking Fabric with Antimicrobial Odor Control Technology

SIZES: XXS-3X, XSP-3XP, XST-XLT

POCKETS: 2

STYLE# 2422

Hidden Message
in waistband

037
Jet
Black



054
New
Navy



064
Royal



1004
Charcoal



1031
Galaxy



1231
Posh
Pink



1263
Sea
Blue



1045
Spruce/
Hunter



017
Teal



046
Ceil



1240
Plumberry/
Wine



COOL COMFORT

MESH TECH TOP

Comfort shaped V-neck fits like your favorite tee. Body mapped mesh venting to keep you cool and dry. Double chest pocket with texture detail. Action back details stretch and move with you in any activity. Reflective Jockey® logo.

BODY: 93% polyester / 7% spandex

Four-Way Stretch Moisture Wicking Fabric with Antimicrobial Odor Control Technology

MESH: 100% COOL COMFORT

POLYESTER

SIZES: S-4X

POCKETS: 2

STYLE# 2412



037
Jet
Black

054
New
Navy

064
Royal

1004
Charcoal

1031
Galaxy



MOISTURE
WICKING



ANTIMICROBIAL
ODOR CONTROL



FOUR-WAY
STRETCH





MOISTURE
WICKING



FOUR-WAY
STRETCH



ANTIMICROBIAL
ODOR CONTROL



STRETCH TECH PANT

Textured full comfort elastic waistband with inside tonal twill tape tie. Two contrast full side hip pockets and two streamlined back welt pockets. Gusseted inseam for freedom of movement and fully functioning zipper fly. Reflective Jockey® logo. 17" leg opening with 3 1/2" inseam.

BODY: 93% polyester / 7% spandex

Four-Way Stretch Moisture Wicking Fabric with Antimicrobial Odor Control Technology

SIZES: S-4X, ST-XLT

POCKETS: 4

STYLE# 2413



037
Jet
Black



054
New
Navy



064
Royal



1004
Charcoal



1031
Galaxy

PERFORMANCE RX®



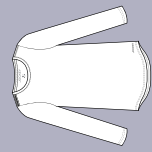
MOISTURE
WICKING



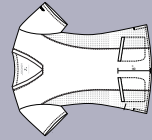
FOUR WAY
STRETCH



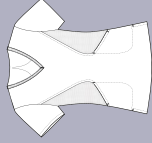
ANTIMICROBIAL
ODOR CONTROL



2408
0 POCKETS
25" LENGTH
P. 66



#2464
2 POCKETS
25" LENGTH
P. 62



#2436
2 POCKETS
25.5" LENGTH
P. 65



#2419
4 POCKETS
25" LENGTH
P. 64

XXS-3X
(SOLID)

XXS-3X

XXS-3X

XXS-3X

XXS-3X
(SOLID)

XXS-3X

XXS-3X

XXS-3X

XXS-3X
(HEATHERED)

XXS-3X

XXS-3X

XXS-3X

XXS-3X
(HEATHERED)

XXS-3X

XXS-3X

XXS-3X

XXS-3X
(HEATHERED)

XXS-3X

XXS-3X

XXS-3X

XXS-3X

XXS-3X

XXS-3X

XXS-3X
(SOLID)

XXS-3X
(HEATHERED)

011
White

037
Jet
Black

054
New
Navy

064
Royal

1031
Galaxy
Blue

1231
Posh Pink

1263
Sea Blue

1004
Charcoal

015
Black

1107
Key Lime

1054
Pewter

017
Teal

046
Cell

1045
Spruce/
Hunter

1240
Plumberry/
Wine

XXS-3X

XXS-3X

XXS-3X

XXS-3X

PERFORMANCE RX®



MOISTURE
WICKING



FOUR-WAY
STRETCH



ANTIMICROBIAL
ODOR CONTROL

| | | MEN'S COLLECTION ▲ | | | | |
|----------------------------|---|---|---|---|---|--|
| | #2466 1 POCKET 31.5" INSEAM P.63 | #2421 5 POCKETS 32" INSEAM P. 67 | #2422 2 POCKETS 32" INSEAM P. 69 | #2428 3 POCKETS 32" INSEAM P. 68 | #2412 2 POCKETS 28" LENGTH P. 70 | #2413 4 POCKETS 31.5" INSEAM P.71 |
| 011 White | | | | | | |
| 037 Jet Black | XXS-3X, XSP-3XP, XST-XLT | XXS-3X, XSP-3XP, XST-XLT | XXS-3X, XSP-3XP, XST-XLT | XXS-3X, XSP-3XP, XST-XLT | S-4X | S-4X, ST-XLT |
| 054 New Navy | XXS-3X, XSP-3XP, XST-XLT | XXS-3X, XSP-3XP, XST-XLT | XXS-3X, XSP-3XP, XST-XLT | XXS-3X, XSP-3XP, XST-XLT | S-4X | S-4X, ST-XLT |
| 064 Royal | XXS-3X, XSP-3XP, XST-XLT | XXS-3X, XSP-3XP, XST-XLT | XXS-3X, XSP-3XP, XST-XLT | XXS-3X, XSP-3XP, XST-XLT | S-4X | S-4X, ST-XLT |
| 1031 Galaxy Blue | XXS-3X, XSP-3XP, XST-XLT | XXS-3X, XSP-3XP, XST-XLT | XXS-3X, XSP-3XP, XST-XLT | XXS-3X, XSP-3XP, XST-XLT | S-4X | S-4X, ST-XLT |
| 1231 Posh Pink | XXS-3X, XSP-3XP, XST-XLT | XXS-3X, XSP-3XP, XST-XLT | XXS-3X, XSP-3XP, XST-XLT | XXS-3X, XSP-3XP, XST-XLT | | |
| 1263 Sea Blue | XXS-3X, XSP-3XP, XST-XLT | XXS-3X, XSP-3XP, XST-XLT | XXS-3X, XSP-3XP, XST-XLT | XXS-3X, XSP-3XP, XST-XLT | | |
| 1004 Charcoal | XXS-3X, XSP-3XP, XST-XLT | XXS-3X, XSP-3XP, XST-XLT | XXS-3X, XSP-3XP, XST-XLT | XXS-3X, XSP-3XP, XST-XLT | S-4X | S-4X, ST-XLT |
| 015 Black | | | | | | |
| 1107 Key Lime | | | | | | |
| 1054 Pewter | | | | | | |
| 017 Teal | | | XXS-3X, XSP-3XP, XST-XLT | XXS-3X, XSP-3XP, XST-XLT | | |
| 046 Cell | | | XXS-3X, XSP-3XP, XST-XLT | XXS-3X, XSP-3XP, XST-XLT | | |
| 1045 Spruce/ Hunter | | | XXS-3X, XSP-3XP, XST-XLT | XXS-3X, XSP-3XP, XST-XLT | | |
| 1240 Plumberry/ Wine | | | XXS-3X, XSP-3XP, XST-XLT | XXS-3X, XSP-3XP, XST-XLT | | |

JOCKEY® SCRUBS MEASURE UP!



ATHLETIC FIT

PerformanceRX® Fit -
A cut that is more body conscious
Athletic inspired fit with fabrics
that keep you cool and moving.



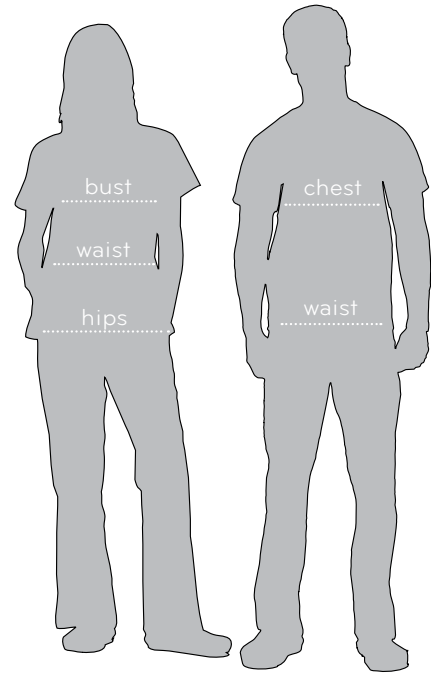
CLASSIC FIT

Classic Fit -
A traditional, relaxed cut.
Slightly longer center back
length and sleeve



MODERN FIT

Modern Fit -
A cut that sits closer to the body
without hugging. Slightly shorter
center back length and sleeve.



Fit tested and expertly crafted. So you look and feel your best all day long.

MEASURING BASICS

Bust & Chest: Place measuring tape under armpits and extend the tape around the broadest section of your chest.

Waist: Place tape around your natural waistline.

Hips: Stand with feet 2-4 inches apart and measure around the fullest part of your hips.

MODERN LADIES' SIZE CHART

| | XXS | XS | S | M | L | XL | 2X | 3X |
|-------|-----|-----|-----|-------|-------|-------|---------|---------|
| Size | 0 | 2-4 | 6-8 | 10-12 | 14-16 | 18-20 | 20W-22W | 24W-26W |
| Bust | 30 | 32 | 34 | 37 | 41 | 44 | 48 | 52 |
| Waist | 22 | 24 | 26 | 29 | 32 | 36 | 40 | 44 |
| Hips | 32 | 34 | 36 | 39 | 43 | 47 | 51 | 54 |

CLASSIC LADIES' SIZE CHART

| | XXS | XS | S | M | L | XL | 2X | 3X | 4X | 5X |
|-------|-------|-------|-------|-------|-------|-------|---------|---------|---------|---------|
| Size | 0 | 2-4 | 6-8 | 10-12 | 14-16 | 18-20 | 20W-22W | 24W-26W | 28W-30W | 32W-34W |
| Bust | 30-31 | 32-33 | 34-36 | 37-39 | 40-42 | 43-46 | 47-50 | 51-54 | 55-58 | 59-62 |
| Waist | 22-23 | 24-25 | 26-27 | 28-30 | 31-33 | 34-37 | 38-41 | 42-45 | 46-49 | 50-53 |
| Hips | 32-33 | 34-35 | 36-38 | 39-41 | 42-44 | 45-48 | 49-52 | 53-56 | 57-60 | 61-64 |

INSEAM CHART LADIES

| | Standard | Petite | Tall |
|---------------|----------|--------|------|
| Inseam Length | 31½" | 29½" | 33½" |

INSEAM CHART MEN'S/UNISEX

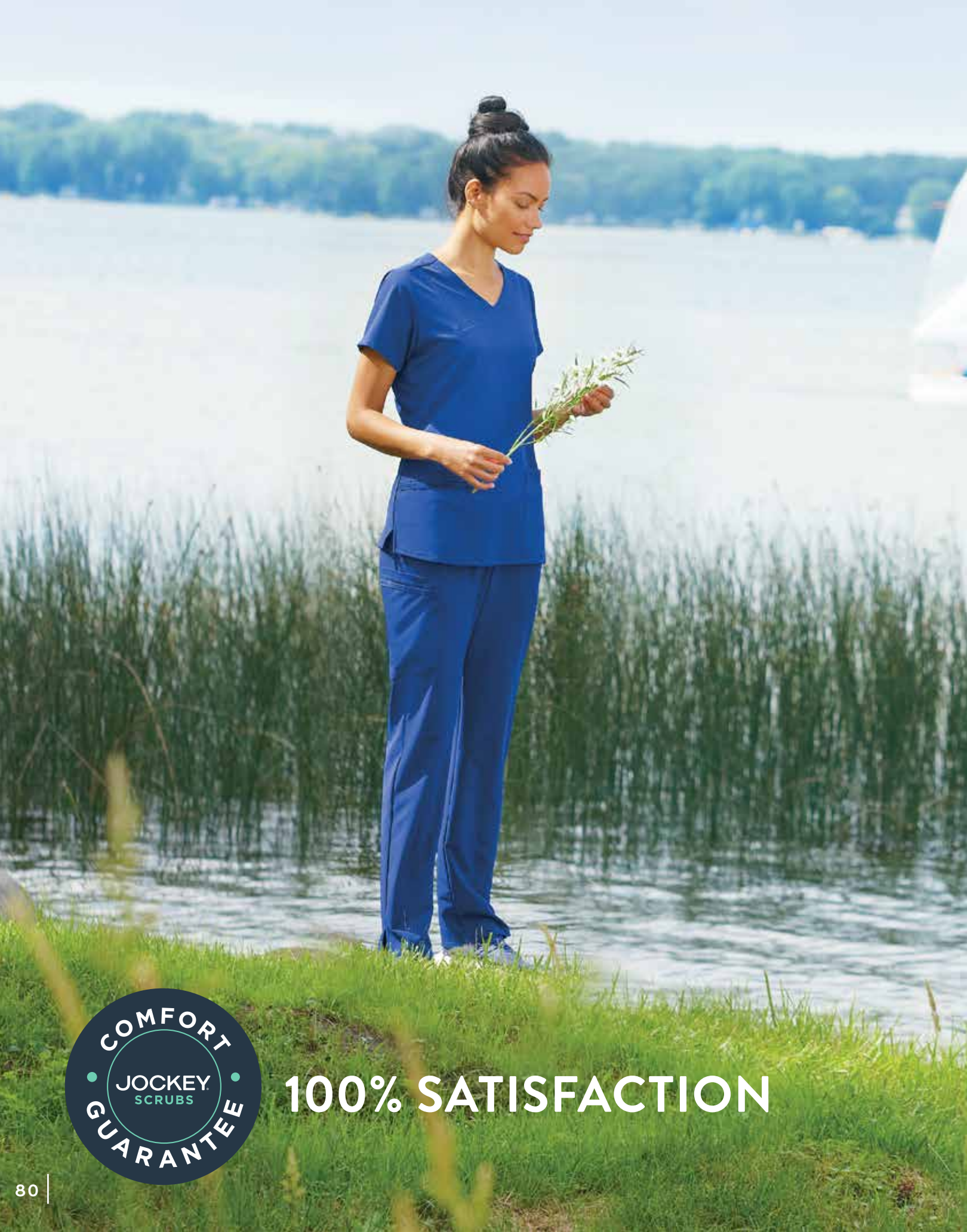
| | Standard | Short | Tall |
|---------------|----------|-------|------|
| Inseam Length | 31½" | 28" | 33½" |

MEN'S SIZE CHART

| | XS | S | M | L | XL | 2X | 3X | 4X |
|------------------|-------|-------|-------|-------|-------|-------|-------|-------|
| Men size (chest) | 30-32 | 34-36 | 38-40 | 42-44 | 46-48 | 50-52 | 54-56 | 58-60 |
| Men's waist | 24-26 | 28-30 | 32-34 | 36-38 | 40-42 | 44-46 | 48-50 | 52-54 |

UNISEX SIZE CHART

| | XS | S | M | L | XL | 2X | 3X | 4X |
|------------------|-------|-------|-------|-------|-------|---------|---------|---------|
| Men size (chest) | 30-32 | 34-36 | 38-40 | 42-44 | 46-48 | 50-52 | 54-56 | 58-60 |
| Men's waist | 24-26 | 28-30 | 32-34 | 36-38 | 40-42 | 44-46 | 48-50 | 52-54 |
| Ladies' size | 2-4 | 6-8 | 10-12 | 14-16 | 18-20 | 20W-22W | 24W-26W | 28W-30W |



100% SATISFACTION



JOCKEY[®]

SCRUBS



Follow us on social media:



[Facebook.com/JockeyScrubs](https://www.facebook.com/JockeyScrubs)



[Instagram.com/Jockey_Scrubs](https://www.instagram.com/Jockey_Scrubs)



INDEX

Performance RX

| | |
|------------|----|
| 2408 | 66 |
| 2412 | 70 |
| 2413 | 71 |
| 2419 | 64 |
| 2421 | 67 |
| 2422 | 69 |
| 2428 | 68 |
| 2436 | 65 |
| 2464 | 62 |
| 2466..... | 63 |

Ladies' Tops & Jackets

| | |
|------------|----|
| 2206 | 15 |
| 2299 | 21 |
| 2306..... | 18 |
| 2309..... | 24 |
| 2329..... | 17 |
| 2339..... | 22 |
| 2356..... | 28 |
| 2378 | 29 |
| 2399..... | 29 |
| 2401 | 16 |
| 2403 | 23 |
| 2448 | 47 |
| 2461 | 48 |
| 2462 | 48 |
| 2468 | 27 |
| 2471 | 10 |

Ladies' Tops & Jackets

| | |
|-----------|----|
| 2473..... | 11 |
| 2474..... | 12 |
| 2475..... | 13 |

Prints

| | |
|-----------|-------|
| 2472..... | 30,31 |
|-----------|-------|

Ladies' Pants

| | |
|------------|----|
| 2249 | 37 |
| 2250 | 44 |
| 2313 | 35 |
| 2358 | 41 |
| 2377 | 42 |
| 2411..... | 32 |
| 2453 | 47 |
| 2459 | 49 |
| 2467..... | 39 |

Men's & Unisex

| | |
|------------|----|
| 2200 | 59 |
| 2305 | 54 |
| 2338 | 58 |
| 2371 | 59 |
| 2373 | 57 |
| 2374..... | 53 |
| 2397 | 56 |



It# RE18575

JOCKEY.
SCRUBS



When you're done with this book, please recycle it. Thanks!



Like us on [Facebook.com/JockeyScrubs](https://www.facebook.com/JockeyScrubs) for special offers and giveaways.

