

# POP-STRETCH

by adar



WE CARE WHAT YOU WEAR.  
[www.adarmedicaluniforms.com](http://www.adarmedicaluniforms.com)

**FUNCTION + FORM + FASHION**

<b>TOPS</b>	<b>4</b>
<b>PANTS</b>	<b>24</b>
<b>JACKETS</b>	<b>38</b>
<b>T-SHIRTS</b>	<b>44</b>
<b>LAB-COATS</b>	<b>50</b>
<b>DRESSES</b>	<b>55</b>
<b>SIZE CHART</b>	<b>57</b>
<b>INDEX</b>	<b>58</b>
<b>COLOR CARD</b>	<b>58</b>





# INTRO

---

Pop-Stretch by Adar is specifically designed to move with you through the workday. The Pop-Stretch Collection combines Adar's technologically-advanced fabrics with contemporary and stylish designs to provide a sporty look and fit that's as comfortable as it is fashionable.



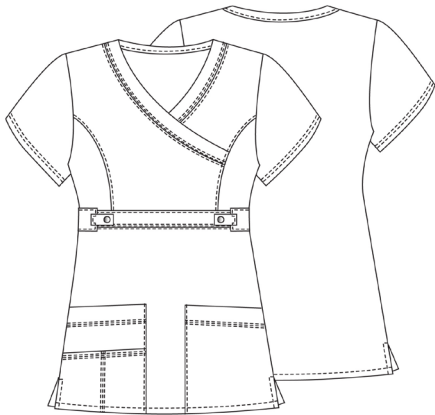


# TOPS

---

3200 | TASKWEAR TAB-WAIST CROSSOVER TOP

6



# 3200 TASKWEAR TAB-WAIST CROSSOVER TOP

Junior Fit top features crossover mock wrap v-neckline with shapely princess-seamed bodice. Empire midriff is enhanced with non-functional snap tabs. Two patch pockets, multi-section accessory pocket, side vents and all-over multi-needle contrast top stitching give this top a functional, stylish vibe.

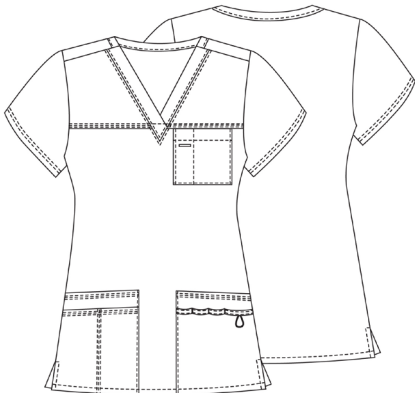
- \* Junior Fit
- \* 55% Cotton 42% Polyester 3% Spandex, Soft Twill
- \* Center back length 25 1/2" in size M

Sizes: XXS, XS, S, M, L, XL, 2X, 3X

## CONTRAST STITCHING



3202 | TASKWEAR SCRUB TOP



8





# 3202 TASKWEAR SCRUB TOP

Junior Fit v-neck top gives a trendy face lift to basic scrubs.  
Top features sporty front yoke seams, multi needle contrast top stitching, pen slot chest pocket, multi sectional and multi functional patch pockets with utility loop and ID bungee loop and side vents.

- \* Junior Fit
- \* 55% Cotton 42% Polyester 3% Spandex, Soft Twill
- \* Center back length 24 1/2" in size M

Sizes: XXS, XS, S, M, L, XL, 2X, 3X

## CONTRAST STITCHING



3204 | TASKWEAR EMPIRE HENLEY TOP

10

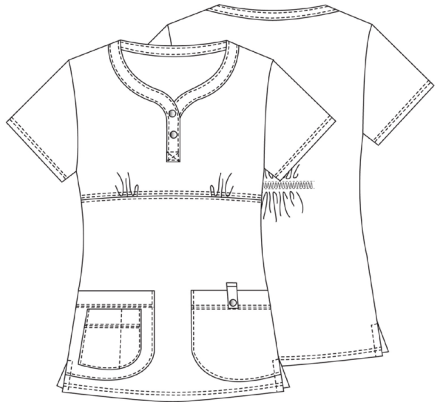


**3204**  
**TASKWEAR EMPIRE HENLEY**  
**TOP**

Junior Fit top with henley style neckline with two functional snaps, empire waist and a bit of gather at the bust creates a shape that is sweet, slim and trim. Features include multiple curved patch pockets with pen slot and snap tab, multi needle contrast top stitching, side vents and back elastic.

- \* Junior Fit
- \* 55% Cotton 42% Polyester 3% Spandex, Soft Twill
- \* Center back length 25" in size M

**Sizes: XXS, XS, S, M, L, XL, 2X, 3X**



**CONTRAST STITCHING**



## TONAL STITCHING

12



## 3206 TASKWEAR CURVE LINE TOP

Junior Fit crew neck top with multi needle tone on tone top stitching features decorative snap-enhanced asymmetrical curved center seam which creates a hidden side pocket. Multiple patch and sectional pockets, ID bungee loop, side vents and back elastic give this lovely fashion top practical functionality.

- \* Junior Fit
- \* 55% Cotton 42% Polyester 3% Spandex, Soft Twill
- \* Center back length 26" in size M

Sizes: XXS, XS, S, M, L, XL, 2X, 3X



3210 | MOCK WRAP TIE TOP

14



# 3210 MOCK WRAP TIE TOP

Charming Junior Fit fashion top brings a fresh look to any professional ensemble. Mock wrap v-neck is outlined in four rows of tonal top stitching. This top's defining detail is a narrow self tie at the left side of the sweetly shaped empire cut waistline. Large patch pockets include the enhanced functionality of a small inner pocket on the right.

- \* Junior Fit
- \* 55% Cotton 42% Polyester 3% Spandex, Soft Twill
- \* Center back length 25" in size M

Sizes: XXS, XS, S, M, L, XL, 2X, 3X



## TONAL STITCHING







# 3218 SEMI-V SEAMED TOP

Charming Junior Fit fashion top brings a fresh look to any professional ensemble. Mock wrap v-neck is outlined in four rows of tonal top stitching. This top's defining detail is a narrow self tie at the left side of the sweetly shaped empire cut waistline. Large patch pockets include the enhanced functionality of a small inner pocket on the right.

- \* Junior Fit
- \* 55% Cotton 42% Polyester 3% Spandex, Soft Twill
- \* Center back length 25" in size M

Sizes: XXS, XS, S, M, L, XL, 2X, 3X



## CONTRAST STITCHING



3232 | WOMEN'S PRINCESS V-NECK TOP

18

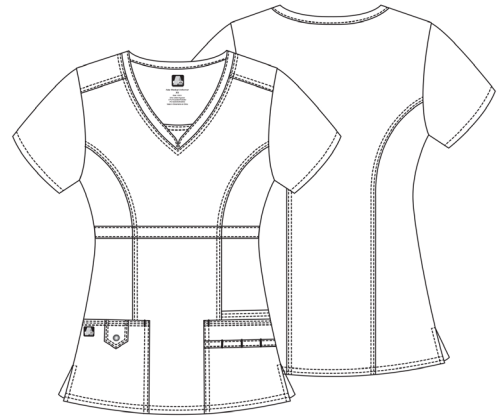


# 3232 WOMEN'S PRINCESS V-NECK TOP

For those who love their v-necks, this top combines several beloved fashion staples. Flattering v-neckline is self-trimmed and features a smart insert for extra coverage. Slimming princess seams and narrow midriff will enhance any figure. Multiple pockets with sectioned pen strip and snap tab provide functionality while multi-needle contrast top-stitching pulls the whole look together

- \* Junior Fit
- \* 55% Cotton 42% Polyester 3% Spandex, Soft Twill
- \* Center back length 26" in size M

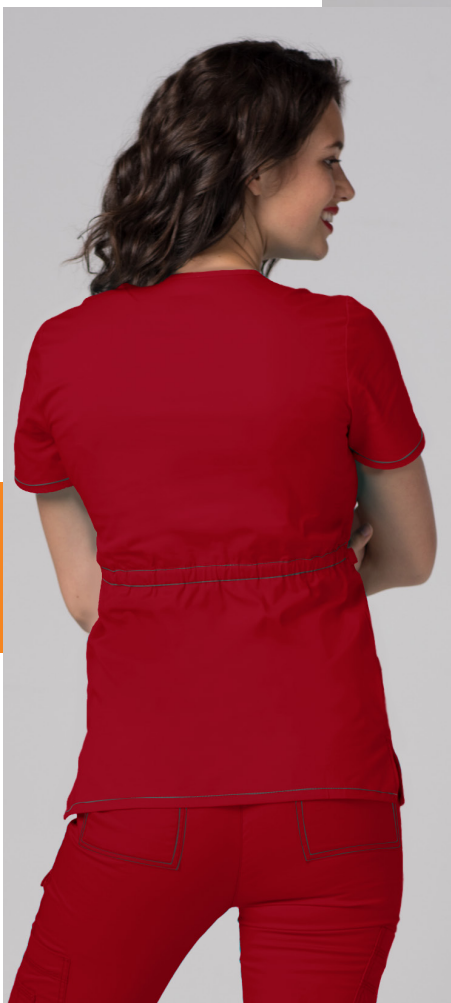
Sizes: XXS, XS, S, M, L, XL, 2X, 3X



## CONTRAST STITCHING



3234 | CROSSOVER ADJUSTABLE TAB TOP



# 3234 CROSSOVER ADJUSTABLE- TAB TOP

This Junior Fit crossover top with adjustable waist tabs takes professional wear to a new place. Crossover v-neckline combines with princess cut styling for a super slimming effect. Graceful little tabs with luxe metal jump rings enhance either side of the midriff and can be adjusted for a perfect fit. Pretty diagonal-cut patch pockets are sectioned off for greater functionality. Encased elastic in back.

- \* Junior Fit
- \* 55% Cotton 42% Polyester 3% Spandex, Soft Twill
- \* Center back length 26 1/2" in size M

Sizes: XXS, XS, S, M, L, XL, 2X, 3X



## CONTRAST STITCHING



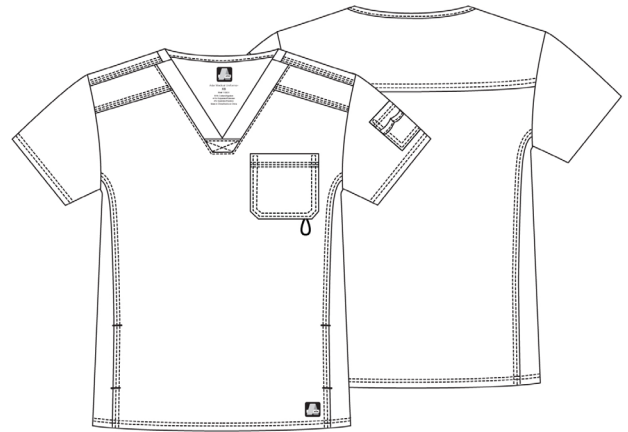
3214 | MENS CONTEMPORARY V-NECK TOP

22



# 3214 MENS CONTEMPORARY V-NECK TOP

Mens fit v-neck top is styled for the individual who likes his comfort with a dash of style. Contrast multi needle top-stitching along all seams are echoed in the cross stitched reinforced v-neck and breast pocket with attached bungee cord. Stitched back and front shoulder yoke and side seam insets with roomy inseam pockets turn a classic top into a modern contemporary garment.



- \* Mens Fit
- \* 55% Cotton 42% Polyester 3% Spandex, Soft Twill
- \* Center back length 29.5" in size M

Sizes: XXS, XS, S, M, L, XL, 2X, 3X

23

## CONTRAST STITCHING



# PANTS

---



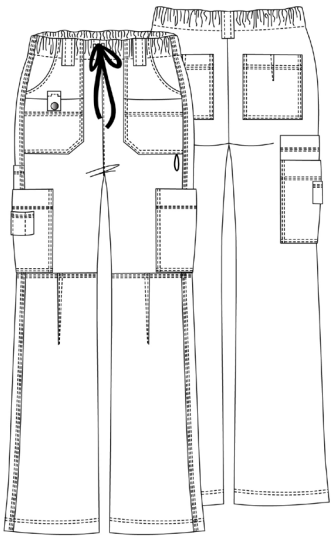




3100 | LOW RISE MULTI POCKET STRAIGHT LEG PANTS



26



# 3100 LOW RISE MULTI POCKET STRAIGHT LEG PANTS

## 3100

Inseam 31"  
XXS, XS, S, M, L, XL, 2X, 3X

## 3100P PETITE

Inseam 28 3/4"  
XXS, XS, S, M, L, XL, 2X, 3X

## 3100T TALL

Inseam 33 1/2"  
XS, S, M, L, XL, 2X, 3X  
**AVAILABLE IN WHITE ONLY**

Junior Fit, low rise, straight leg pants feature all around elastic waist with outer mesh drawstring, wide belt loops and a grand total of nine pockets to make this the ultimate pair of utility pants. Variety includes front patch and exterior pockets, cargo pockets and back pockets. Functional details like elastic bungee loop, tab with snap and triple pen holder on right go hand in hand with style elements like multi needle contrast top stitching. Low rise styling features straight cut leg with front motion knee darts.

\* Junior Fit

\* 55% Cotton 42% Polyester 3% Spandex, Soft Twill

### CONTRAST STITCHING



27

### PETITE AVAILABLE IN

- BLACK
- ROYAL BLUE
- CEIL BLUE
- TEAL GREEN
- FUCHSIA
- WHITE
- KHAKI
- WINE
- NAVY

### TALL AVAILABLE IN

- WHITE

3102 | LOW RISE BOOT CUT BUNGEE LEG PANTS

28

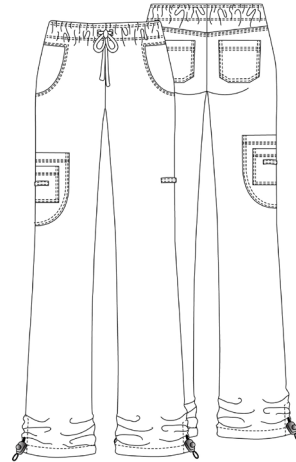


# 3102 LOW RISE BOOT CUT BUNGEE LEG PANTS

This pair of Junior Fit, low rise, boot cut pants is so cool and stylish, it's easy to forget how functional it really is. Features include back elastic waist with outer self-fabric drawstring, scoop side pockets, multi cargo pockets with utility loops, back yoke and two back pockets. Multi needle contrast top stitching enhances all seams and adjustable side stoppers at leg bottoms fits comfortably over shoes.

- \* Junior Fit
- \* 55% Cotton 42% Polyester 3% Spandex, Soft Twill
- \* Inseam 30 3/4"

Sizes: XXS, XS, S, M, L, XL, 2X, 3X



## CONTRAST STITCHING



3104 | MID RISE FLARE LEG PANTS



30

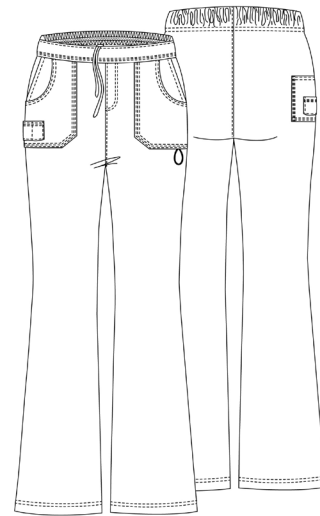


# 3104 MID RISE FLARE LEG PANTS

Junior Fit, mid rise, flare leg pants combine a modern fit with a comfortable cut. Flat front waistband looks smooth, with inner mesh drawstring and elastic back keep it snug. Multi needle contrast top stitching, side slash and scoop pockets, elastic bungee loop and sectional pen slots make this an easy-to-wear favorite pair.

- \* Junior Fit
- \* 55% Cotton 42% Polyester 3% Spandex, Soft Twill
- \* Inseam 31"

Sizes: XXS, XS, S, M, L, XL, 2X, 3X



31

## CONTRAST STITCHING



3106 | MID RISE STRAIGHT LEG DRAWSTRING CARGO PANTS



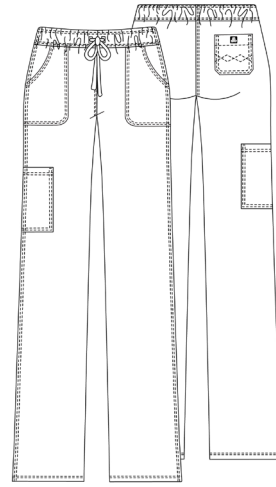


# 3106 MID RISE STRAIGHT LEG DRAWSTRING CARGO PANTS

Junior Fit, mid rise, straight leg pants features all around elastic with outer mesh drawstring and is enhanced with multi needle tonal stitching. Left and right slash patch pockets and large cargo pocket on right leg offer practical functionality. Argyle stitched back hip pocket adds charming detail.

- \* Junior Fit
- \* 55% Cotton 42% Polyester 3% Spandex, Soft Twill
- \* Inseam 31"

Sizes: **XXS, XS, S, M, L, XL, 2X, 3X**



## TONAL STITCHING



**3108**  
**LOW-RISE 11-POCKET**  
**SLIM CARGO PANTS**

34

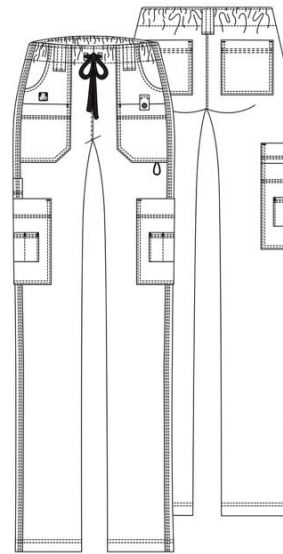


## 3108 | LOW-RISE 11-POCKET SLIM CARGO PANTS

Junior Fit, low rise, slim straight leg pants features all around elastic with outermesh contrast drawstring and is enhanced with multi needle contrast stitching. A grand collection of 11 pockets include slash, patch, cargo and sectioned varieties. Substantial belt loops, a snap tab and bungee loop complete this deluxe pair of cargo pants.

- \* Junior Fit
- \* 55% Cotton 42% Polyester 3% Spandex, Soft Twill
- \* Inseam 30"

Sizes: XXS, XS, S, M, L, XL, 2X, 3X



### CONTRAST STITCHING



3107 | MENS 7-POCKET CARGO PANTS

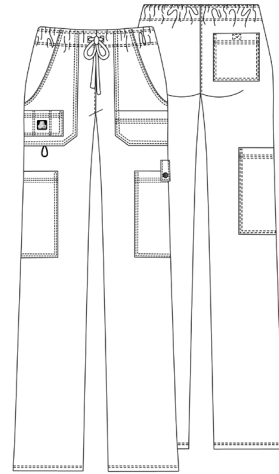


# 3107 MENS 7-POCKET CARGO PANTS

Mens fit pants features all around elastic with outer mesh drawstring and is enhanced with multi needle contrast top stitching. Left and right slash patch pockets are combined with attached sectioned and single mini pockets and bungee loop. Right leg has large open cargo pocket. Left leg cargo pocket has snap closure tab. Full size back hip pocket features cross stitched velcro closure.

- \* Mens Fit
- \* 55% Cotton 42% Polyester 3% Spandex, Soft Twill
- \* Inseam 31.5"

Sizes: **XXS, XS, S, M, L, XL, 2X, 3X**



## CONTRAST STITCHING

37





Torro qui berrorest rendis unt,  
consequa vendusape sedione  
sequaes ciatur resed et magnisi  
dolore experum reptatiunt, quos  
delibusa por aut as de eturiam,  
nemo conet veles eture conseror  
sin consequi consequasime nus  
nonsect orporep ellamet aut fugia  
cullaccus.  
Igendis es as idioritiunt aliquam ea

# JACKETS

---

3208 | TASKWEAR TOPPER JACKET

40



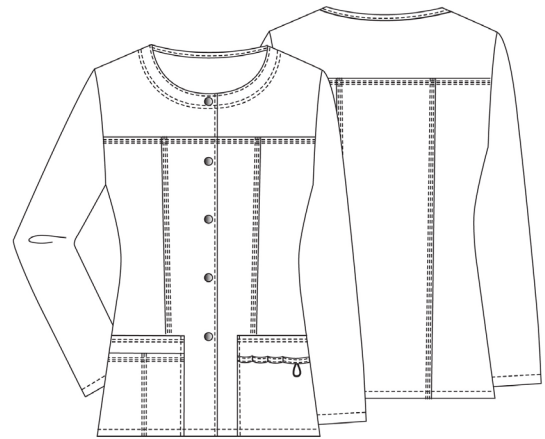


# 3208 TASKWEAR TOPPER JACKET

Junior Fit crew neck snap-front shapely topper is a great way to feel neat and put together. Wear this jacket over a t-shirt to ward off chills or just create a coordinated look. Multi needle tone on tone top stitching enhances yoke and princess seaming, multi sectional and multi functional patch pockets. Utility and ID bungee loops are practical touches.

- \* Junior Fit
- \* 55% Cotton 42% Polyester 3% Spandex, Soft Twill
- \* Center back length 28" in size M

Sizes: XXS, XS, S, M, L, XL, 2X, 3X



## CONTRAST STITCHING



3216 | ZIP FRONT WARM UP JACKET

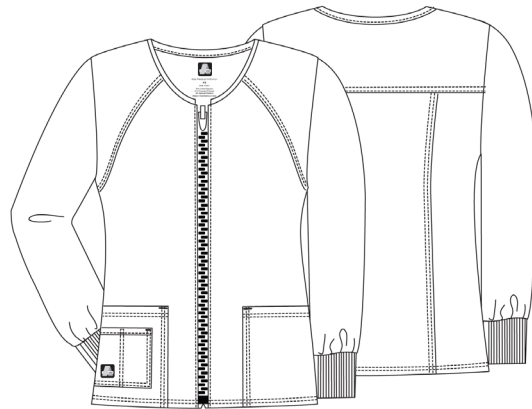


# 3216 ZIP FRONT WARM UP JACKET

Junior Fit round neck zippered warm up jacket gets its clean-cut modern shape from diagonally curved shoulder yoke and back princess seaming. Classic patch pockets are enhanced with a mini sectioned pocket. Deluxe details include a self-edged scoop neckline, cozy knit cuffs and tonal multi needle stitching.

- \* Junior Fit
- \* 55% Cotton 42% Polyester 3% Spandex, Soft Twill
- \* Center back length 27.5" in size M

Sizes: XXS, XS, S, M, L, XL, 2X, 3X



## TONAL STITCHING



# UNDERSCRUB T-SHIRTS

---





3400 | LONG SLEEVE FITTED TEE



46



# 3400 LONG SLEEVE FITTED TEE

A long sleeved, Junior Fit, crew neck tee, with beautiful contrast cross-stitch on neckline, sleeves and hem. Made from 95% cotton and 5% spandex to give an extra fit/stretch with an extra soft fabric finish to provide incredible comfort all day.

- \* Junior Fit
- \* 95% Cotton 5% Spandex
- \* Center back Length 24 1/2" in size M

Sizes: XXS, XS, S, M, L, XL, 2X, 3X



## CONTRAST STITCHING

47







# 3402 TONAL LONG SLEEVE FITTED TEE

A long sleeved, Junior Fit, crew neck tee, with beautiful contrast cross-stitch on neckline, sleeves and hem. Made from 95% cotton and 5% spandex to give an extra fit/stretch with an extra soft fabric finish to provide incredible comfort all day.

- \* Junior Fit
- \* 95% Cotton 5% Spandex
- \* Center back Length 24 1/2" in size M

**Sizes: XXS, XS, S, M, L, XL, 2X, 3X**



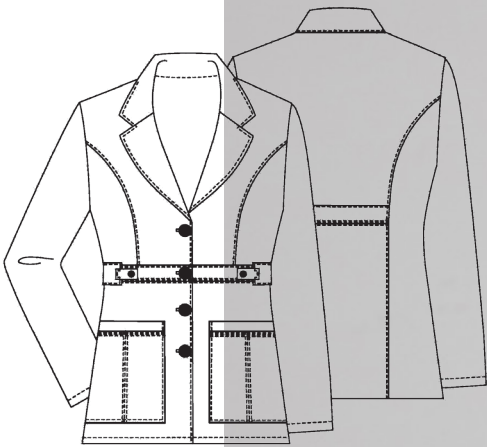
## TONAL STITCHING





# LAB COATS & DRESSES

---



## 3300 WOMEN'S 28" TAB-WAIST LAB COAT

Princess-seamed tailored, Junior Fit lab coat gives stylish flare to everyday workwear - four button closure and back belt inset for feminine shape, with two roomy lower patch pockets and tagless neck for comfort and function.

- \* Junior Fit
- \* 65% Polyester 35% Cotton, Durable Poplin
- \* Center back length 28" in size M

Sizes: XXS, XS, S, M, L, XL, 2X, 3X  
AVAILABLE IN WHITE ONLY



53

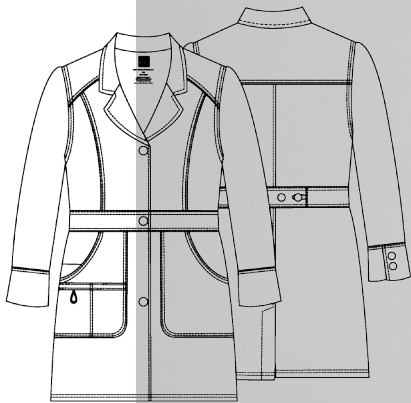


## 3304 WOMEN'S 36" TAB-WAIST LAB COAT

Show off your feminine shape with this Junior Fit, princess-seam tailored lab coat. Notched lapel collar, four button closure and back belt inset for fit. Two roomy lower patch pockets and tagless neck for function and comfort.

- \* Junior Fit
- \* 65% Polyester 35% Cotton, Durable Poplin
- \* Center back length 36" in size M

Sizes: XXS, XS, S, M, L, XL, 2X, 3X  
AVAILABLE IN WHITE ONLY



## 3306 WOMEN'S 32" PERFECTION LAB COAT

Add some feminine flare to your wardrobe without sacrificing utility - this crisply tailored lab coat provides a trendy touch to your everyday workwear. 3-button front closure offers extra coverage, with multi layered patch pockets and bonus interior pockets for enhanced function. Back midriff with multiple buttons and bungee loops provide an adjustable fit for comfort and style.

- \* Junior Fit
- \* 65% Polyester 35% Cotton, Durable Poplin
- \* Center back length 32" in size M

Sizes: XXS, XS, S, M, L, XL, 2X, 3X  
AVAILABLE IN WHITE ONLY



55



### **3236** **WOMEN'S SHORT SLEEVE** **BACK-SMOCKED DRESS**

This Junior Fit, short sleeved smock dress gives you a feminine shape with increased mobility to keep you comfortable. Lapel collar and button down styling add professional style, with elastic smocking, double sectioned patch pockets, and side slits for added movement and utility.

- \* Junior Fit
- \* 65% Polyester 35% Cotton, Durable Poplin
- \* Center back length 40 1/2" in size M

**Sizes: XXS, XS, S, M, L, XL, 2X, 3X**  
**AVAILABLE IN WHITE ONLY**



## 3302 MENS 31" SNAP FRONT LAB COAT

Neat and tailored mens lab coat provides a professional fit with enhanced comfort - 3 snap front closures, with patch pockets and breast pocket for the utility you need.

- \* Mens fit
- \* 65% Polyester 35% Cotton, Durable Poplin
- \* Center back length 31" in size M

**Sizes: XXS, XS, S, M, L, XL, 2X, 3X**  
**AVAILABLE IN WHITE ONLY**



# SIZE CHART

WOMEN'S JUNIOR FIT		INSEAM REGULAR 30.5" - 31"   PETITE: 28 - 28.5"   TALL: 33.5 - 34"								
SIZE	XXS	XS	S	M	L	XL	2XL	3XL	4XL	5XL
CONVERSION	0	2/4	6/8	10/12	14/16	18/20	22/24	26/28	30/32	34/36
CHEST/BUST	30-31	32-33	34-35	36-38	39-42	43-46	47-50	51-54	55-58	59-62
WAIST	22-23	24-25	26-27	28-30	31-34	35-38	39-42	43-46	47-50	51-54
HIP	33-34	35-36	36-37	38-40	41-44	45-48	49-52	53-56	57-62	63-66

**WOMEN'S JUNIOR FIT** Styles are contoured and shaped without being too tight. Most top styles are shorter in length and pants sit lower on the waist with a shorter rise. If measurements fall between two sizes, it is better to choose the larger size. Please contact us for questions or help with our sizing information.

MEN		INSEAM REGULAR 31"								
SIZE	XXS	XS	S	M	L	XL	2XL	3XL	4XL	5XL
CONVERSION	30-32	34-36	38-40	42-44	46-48	50-52	54-56	58-60	62-64	0
CHEST/BUST	29-31	32-34	35-37	38-40	42-44	46-48	50-52	54-56	58-60	62-64
WAIST	21-23	24-26	27-29	30-32	34-36	38-40	42-44	46-48	50-52	54-56
HIP	29-31	32-34	35-37	38-40	42-44	46-48	50-52	54-56	58-60	62-64

**REGULAR:** Describes a well proportioned, average height body 5'8" - 6' tall.

# INDEX

<b>3100</b> LOW RISE MULTI POCKET STRAIGHT LEG PANTS	26	<b>3210</b> MOCK WRAP TIE TOP	14
<b>3100P</b> LOW RISE MULTI POCKET STRAIGHT LEG PANTS PETITE	26	<b>3214</b> MENS CONTEMPORARY V-NECK TOP	22
<b>3100T</b> LOW RISE MULTI POCKET STRAIGHT LEG PANTS TALL	26	<b>3216</b> ZIP FRONT WARM UP JACKET	42
<b>3102</b> LOW RISE BOOT CUT BUNGEE LEG PANTS	28	<b>3218</b> SEMI-V SEAMED TOP	16
<b>3104</b> MID RISE FLARE LEG PANTS	30	<b>3232</b> WOMEN'S PRINCESS V-NECK TOP	18
<b>3106</b> MID RISE STRAIGHT LEG DRAWSTRING CARGO PANTS	32	<b>3234</b> CROSSOVER ADJUSTABLE-TAB TOP	20
<b>3107</b> MENS 7-POCKET CARGO PANTS	36	<b>3236</b> SHORT SLEEVE BACK-SMOCKED DRESS	55
<b>3108</b> LOW-RISE 11-POCKET SLIM CARGO PANTS	34	<b>3300</b> WOMEN'S 28" TAB-WAIST LAB COAT	52
<b>3200</b> TASKWEAR TAB-WAIST CROSSOVER TOP	6	<b>3302</b> MENS 31" SNAP FRONT LAB COAT	56
<b>3202</b> TASKWEAR SCRUB TOP	8	<b>3304</b> WOMEN'S 36" TAB-WAIST LAB COAT	53
<b>3204</b> TASKWEAR EMPIRE HENLEY TOP	10	<b>3306</b> WOMEN'S 32" PERFECTION LAB COAT	54
<b>3206</b> TASKWEAR CURVE LINE TOP	12	<b>3400</b> LONG SLEEVE FITTED TEE	46
<b>3208</b> TASKWEAR TOPPER JACKET	40	<b>3402</b> TONAL LONG SLEEVE FITTED TEE	48

# COLORS

58



BLACK



CARDINAL



CARIBBEAN BLUE



CEIL BLUE



CELERY



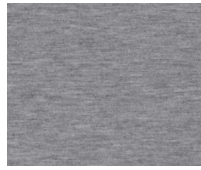
CHARCOAL



CHARTREUSE



CITRON



DARK MARL GRAY



EGGPLANT



FUCHSIA



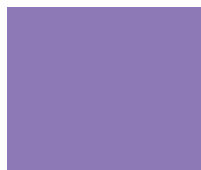
GALAXY BLUE



HUNTER GREEN



KHAKI



LAVENDER



MANDARIN ONG



NAVY



OLIVE



PLUM



ROYAL BLUE



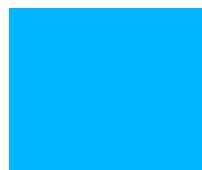
SEA GLASS



TEAL GREEN



TUBEROSE



TURQUOISE



WATERMELON



WINE



WHITE





POP-STRETCH  
by adar

INDULGENCE  
by adar

UNIVERSAL  
by adar



Adar Medical Uniforms, LLC  
24 Division Place Brooklyn, NY 11222  
(Around the corner of Richardson street)



718-935-1197  
Toll Free: 1-866-570-6964  
Fax: 718-228-2027



[www.adarmedicaluniforms.com](http://www.adarmedicaluniforms.com)  
[info@adarmedicaluniforms.com](mailto:info@adarmedicaluniforms.com)

POP-STRETCH  
by adar



@adarmeduniforms



@adarmeduniforms



@adarmeduniforms

#AMU10012017